



Security & Privacy



POLYCLOUD

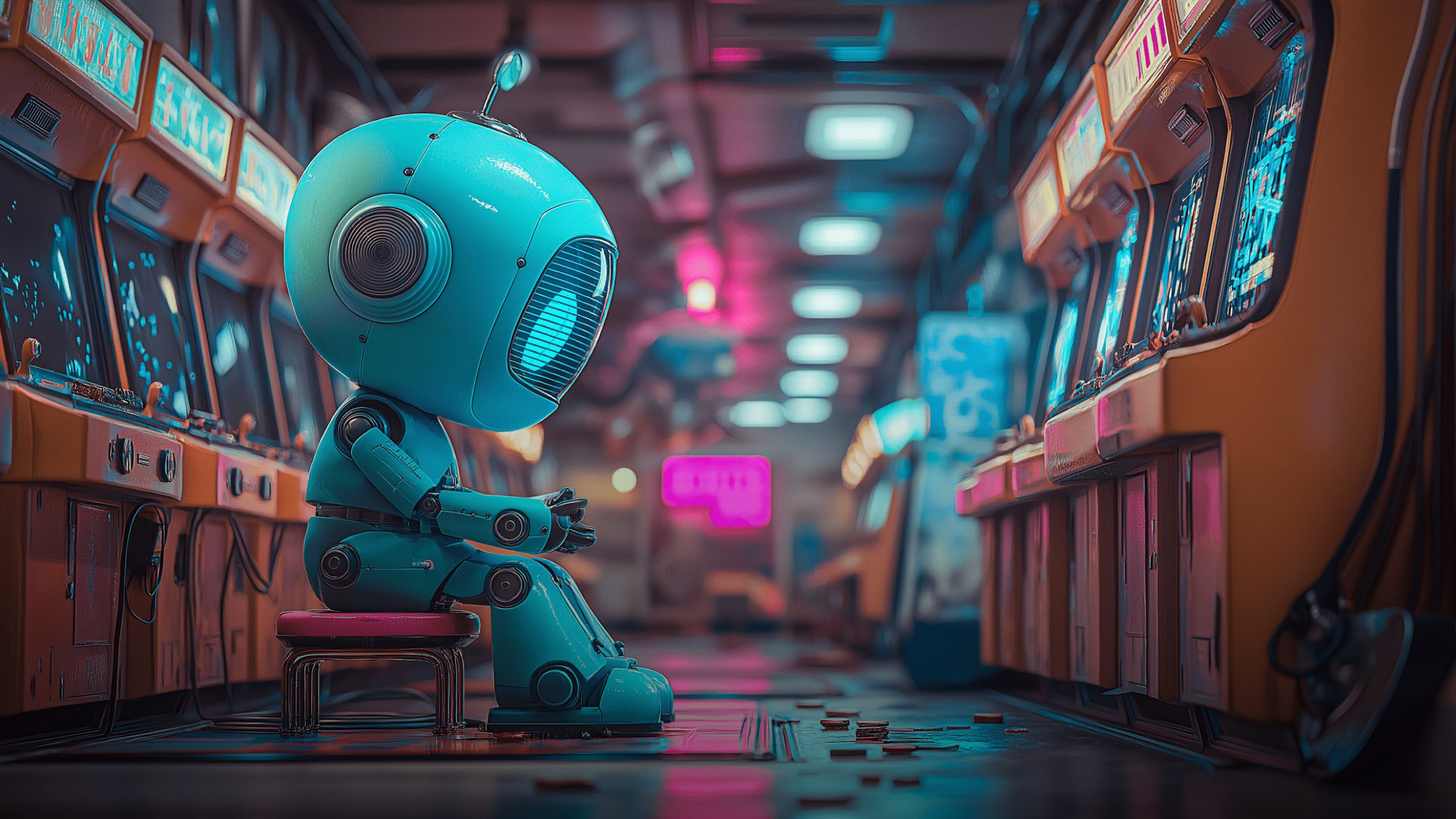
Édition 2026

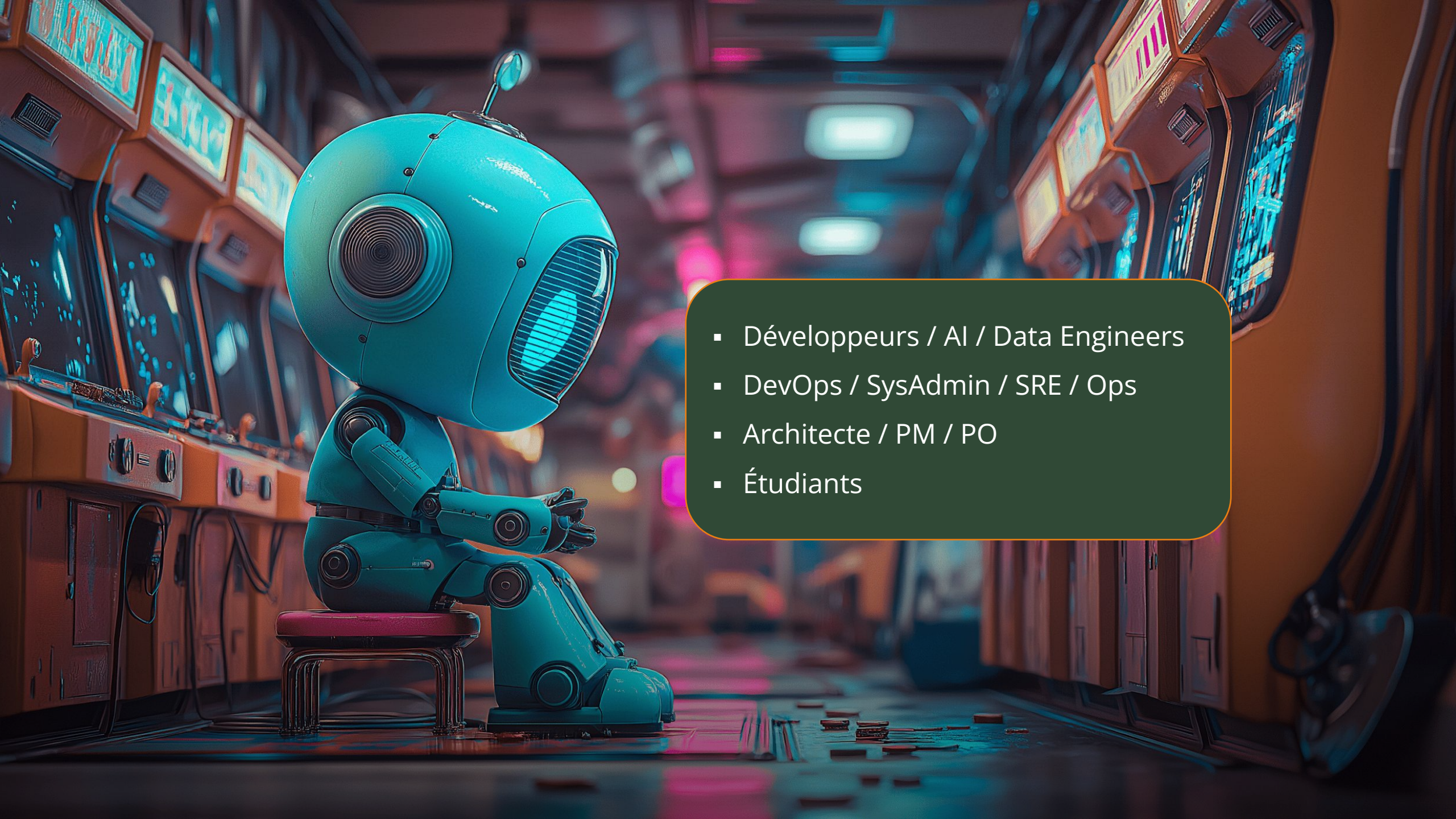
SÉCURISEZ VOS PROTOTYPES AVEC OAUTH2-PROXY ET ANUBIS



DAVID APARICIO

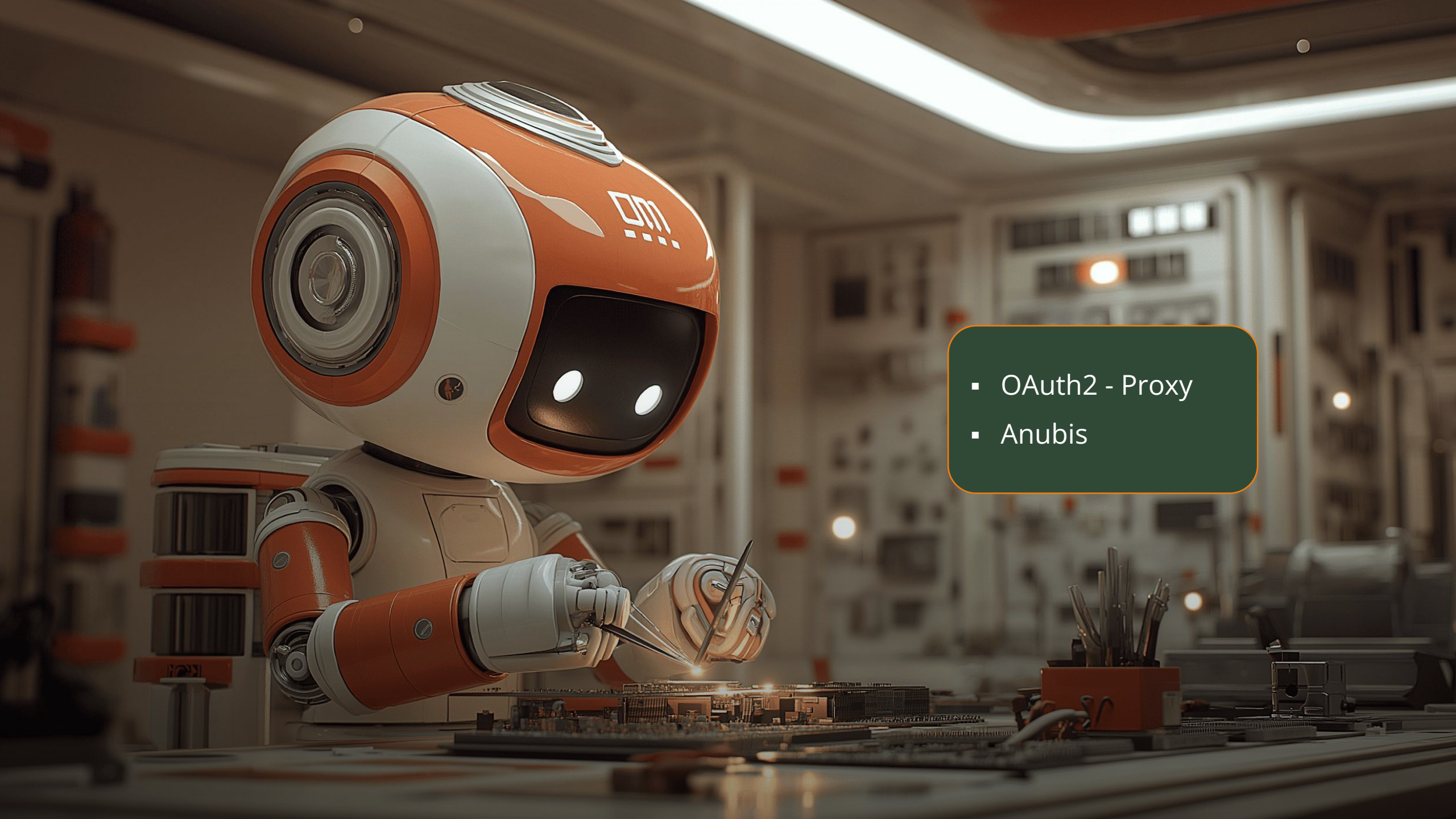
EUDONET





- Développeurs / AI / Data Engineers
- DevOps / SysAdmin / SRE / Ops
- Architecte / PM / PO
- Étudiants



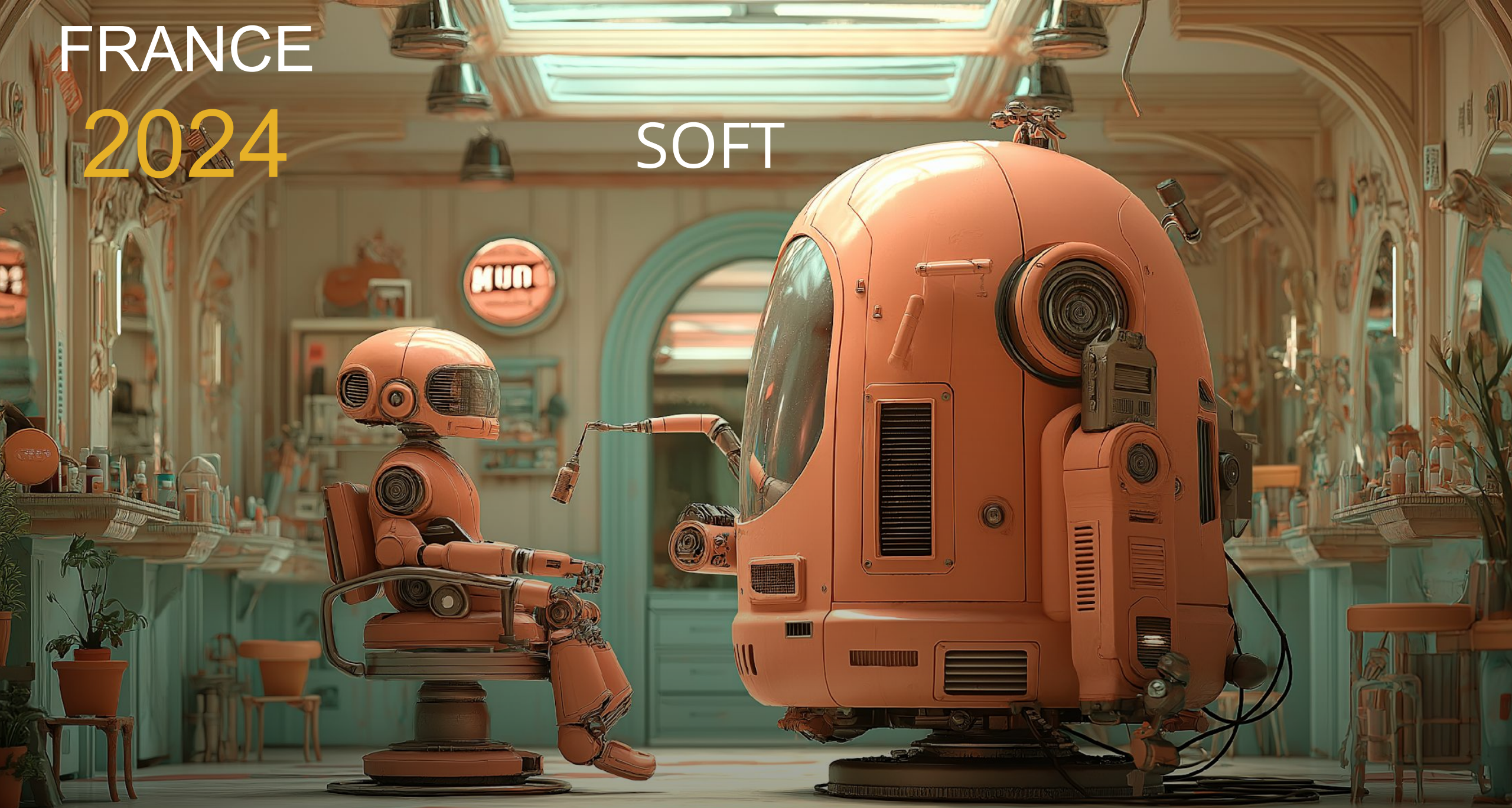


- OAuth2 - Proxy
- Anubis

FRANCE

2024

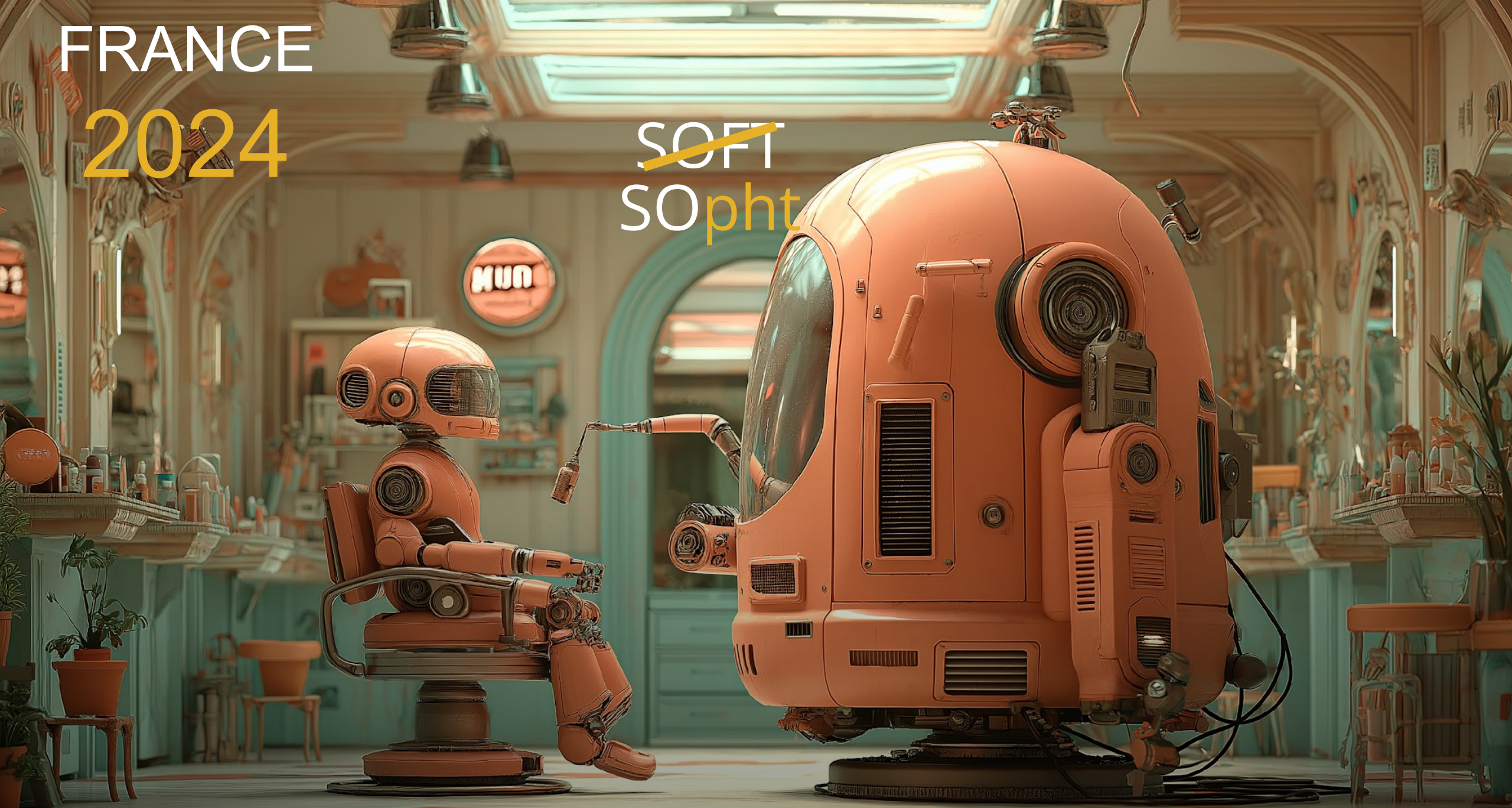
SOFT



FRANCE

2024

~~SOFT~~
SOphT



FRANCE 2024

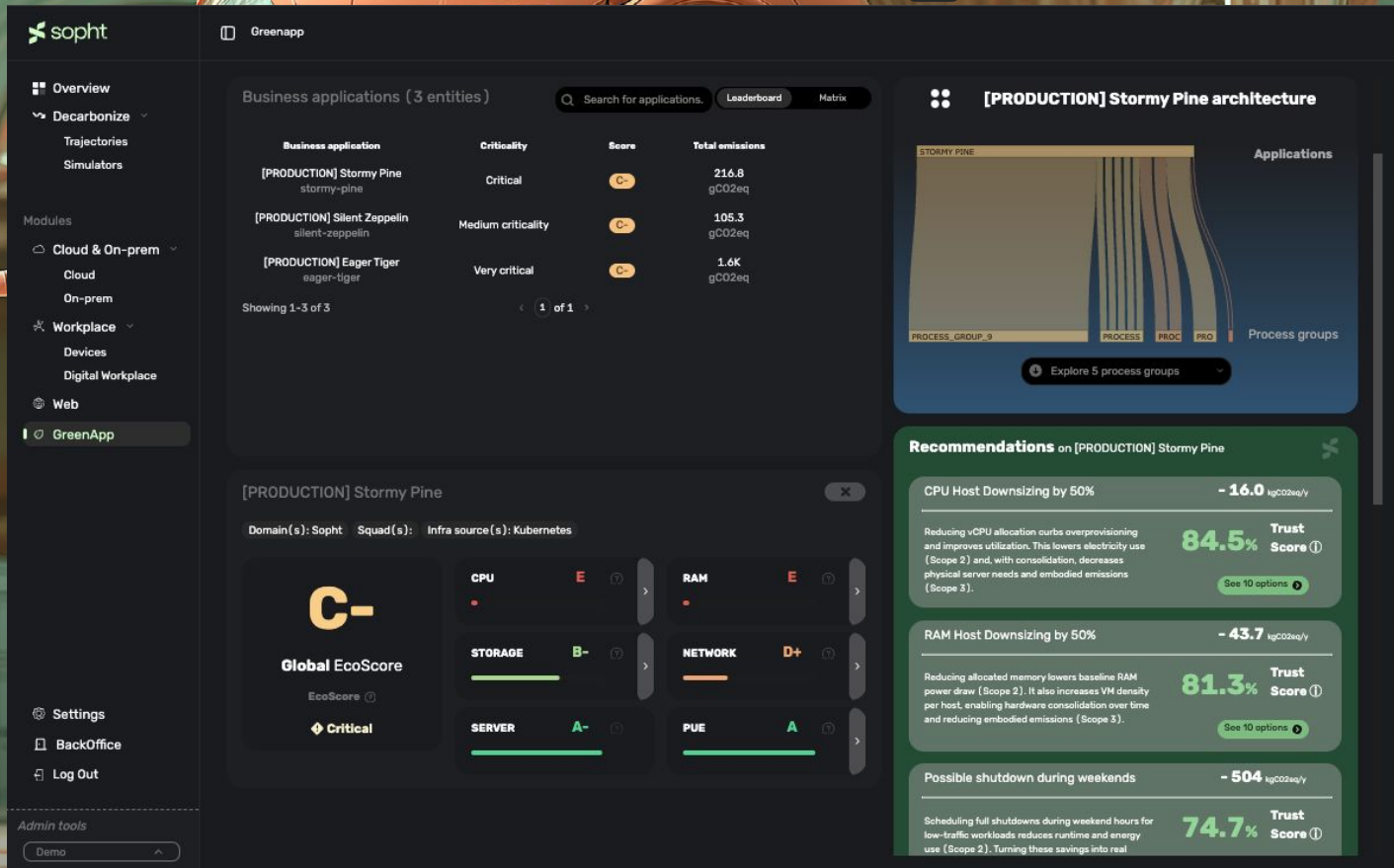
~~SOFT~~
SOphT



FRANCE 2024

~~SOFT~~
SOphT

 Retool



The screenshot displays the Sopht GreenApp interface. On the left is a navigation sidebar with sections for Overview, Decarbonize, Modules, and Settings. The main content area shows a table of business applications and a detailed view for the 'Stormy Pine' application, including a Global EcoScore and a list of recommendations for optimization.

Business application	Criticality	Score	Total emissions
[PRODUCTION] Stormy Pine stormy-pine	Critical	C-	214.8 gCO2eq
[PRODUCTION] Silent Zeppelin silent-zeppelin	Medium criticality	C-	105.3 gCO2eq
[PRODUCTION] Eager Tiger eager-tiger	Very critical	C-	1.6K gCO2eq

[PRODUCTION] Stormy Pine architecture

Domain(s): Sopht Squad(s): Infra source(s): Kubernetes

Global EcoScore
EcoScore ⓘ
Critical

Resource	Score
CPU	E
RAM	E
STORAGE	B-
NETWORK	D+
SERVER	A-
PUE	A

Recommendations on [PRODUCTION] Stormy Pine

- CPU Host Downsizing by 50% - 16.0 kgCO2eq/y (84.5% Trust Score)
- RAM Host Downsizing by 50% - 43.7 kgCO2eq/y (81.3% Trust Score)
- Possible shutdown during weekends - 504 kgCO2eq/y (74.7% Trust Score)

FRANCE 2024

~~SOFT~~
SOphT

 Streamlit



sopht Global / Web / Web

Web Monitoring

Audit Coverage **72 / 439** pages

Audited Pages Emissions **1.2** tCO₂eq

Projected Pages Emissions **7.3** tCO₂eq

Efficiency **0.42** kWh/page pour 10k visites

Performance **63%** Global Performance

Usage **382 MB** Cumulated Bandwidth

5.17 minutes Cumulated Loading Time

Desktop : 85%

Mobile : 45%

WebSpace	Efficiency	Perf.
solutions	1.33 kWh/page	64 %
blog	2.72 kWh/page	86 %
impact	2.01 kWh/page	15 %
innovation	1.72 kWh/page	62 %
products	1.26 kWh/page	82 %
news	1.20 kWh/page	94 %
impact	1.64 kWh/page	96 %
news	0.52 kWh/page	66 %

Settings Log Out

FRANCE 2024

pypi.org/project/streamlit-oauth/#history

streamlit-oauth 0.1.14

pip install streamlit-oauth

Released: Oct 10, 2024

Simple OAuth2 authorization code flow for Streamlit

Navigation

- Project description
- Release history**
- Download files

Verified details

These details have been *verified* by PyPI

Maintainers

dnplus

Unverified details

These details have *not* been verified by PyPI

Project links

- Homepage

Meta

- Author: [Dylan Lu](#)
- Requires: Python >=3.9

[Report project as malware](#)

Release history

[Release notifications](#) | [RSS feed](#)

THIS VERSION	0.1.14 Oct 10, 2024
	0.1.13 Jul 13, 2024
	0.1.11 Jul 12, 2024
	0.1.9 Jun 5, 2024
	0.1.8 Feb 13, 2024
	0.1.7 Feb 1, 2024

FRANCE

2024

SOphT

Comment sécuriser notre appli., facilement, sans modification du code du DEV, ou une installation d'une librairie peu maintenue ?



/ SECURITY GUIDE

Summary Plan

- 1 / LE PROBLÈME
- 2 / LE PROTOCOLE
- 3 / OAUTH2-PROXY
- 4 / LIVE DEMO
- 5 / LES DIFFICULTÉS
- 6 / ANUBIS
- 7 / LIVE DEMO
- 8 / CONCLUSION

- 9 / Q&A



OAuth2 quèsaco

À quel problème répond-il ?



/ OAUTH2 - LE PROBLÈME

Facebook

Dans un temps, pas si lointain...

Step 1
Find Your Friends

Are your friends already on Facebook?

Many of your friends may already be here. Searching your email account is the fastest way to find your friends on Facebook. [See how it works.](#)



Outlook.com (Hotmail)

Find Friends



AOL

Find Friends



Comcast

Find Friends



Other Email Service

Please enter a valid username and password

Your Email

Email Password

Find Friends

Facebook won't store your password.

Next

©Facebook



Facebook stores your contact list for you so that we can help you reach more people and connect friends. [Learn more.](#)

.. les problèmes sont vites arrivés

Confirm Your Email

To continue using Facebook, you'll need to confirm your email. Since you signed up with **fakemanjenkins@yandex.com**, you can do that automatically through yandex.com.

Your Email **fakemanjenkins@yandex.com**

Email Password

🔒 Facebook won't store your password.

[Need Help?](#)

[Update Contact Info](#)

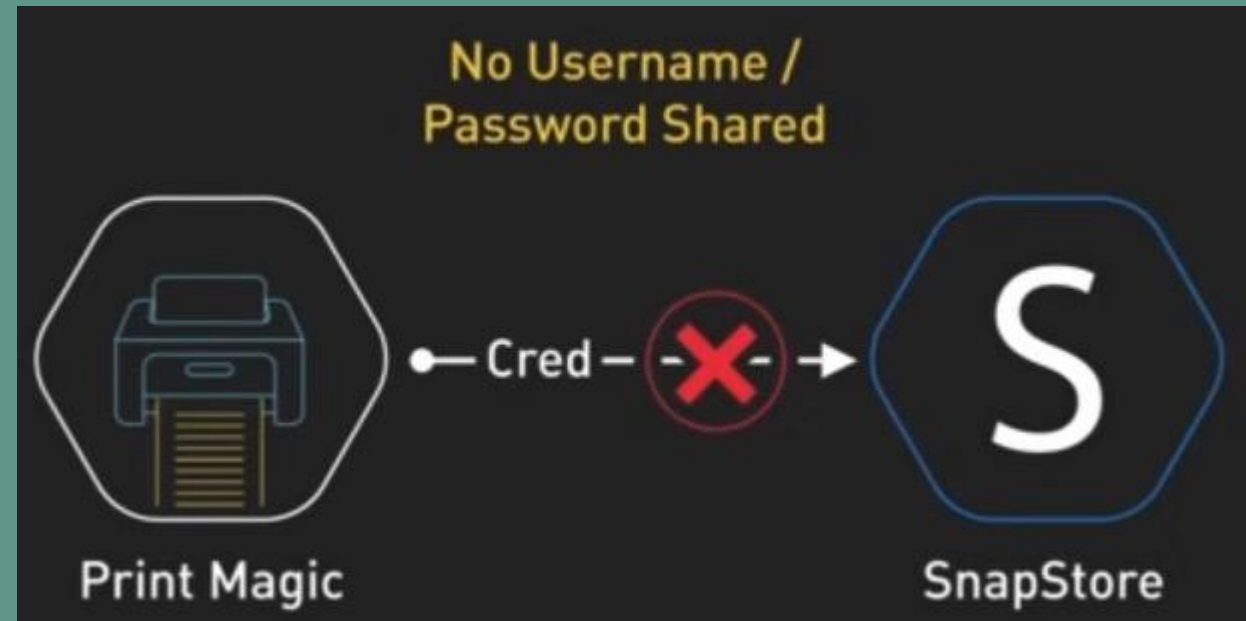
[Connect to yandex.com](#)

/ OAUTH2 - LE PROBLÈME

Phishing

©EFF.org

Comment se connecter alors ?




©ByteByteGo

/ OAUTH2 - LE PROBLÈME

Objectif

La naissance du protocole

 datatracker.ietf.org/doc/html/rfc6749

Internet Engineering Task Force (IETF)
Request for Comments: 6749
Obsoletes: [5849](#)
Category: Standards Track
ISSN: 2070-1721

D. Hardt, Ed.
Microsoft
October 2012

The OAuth 2.0 Authorization Framework

Abstract

The OAuth 2.0 authorization framework enables a third-party application to obtain limited access to an HTTP service, either on behalf of a resource owner by orchestrating an approval interaction between the resource owner and the HTTP service, or by allowing the third-party application to obtain access on its own behalf. This specification replaces and obsoletes the OAuth 1.0 protocol described in [RFC 5849](#).

/ OAUTH2 - LE PROTOCOLE

RFC 6749

Tout un vocabulaire

OAuth 2.0 Explained In Plain English

ByteByteGo.com



/ OAUTH2 - LE PROTOCOLE

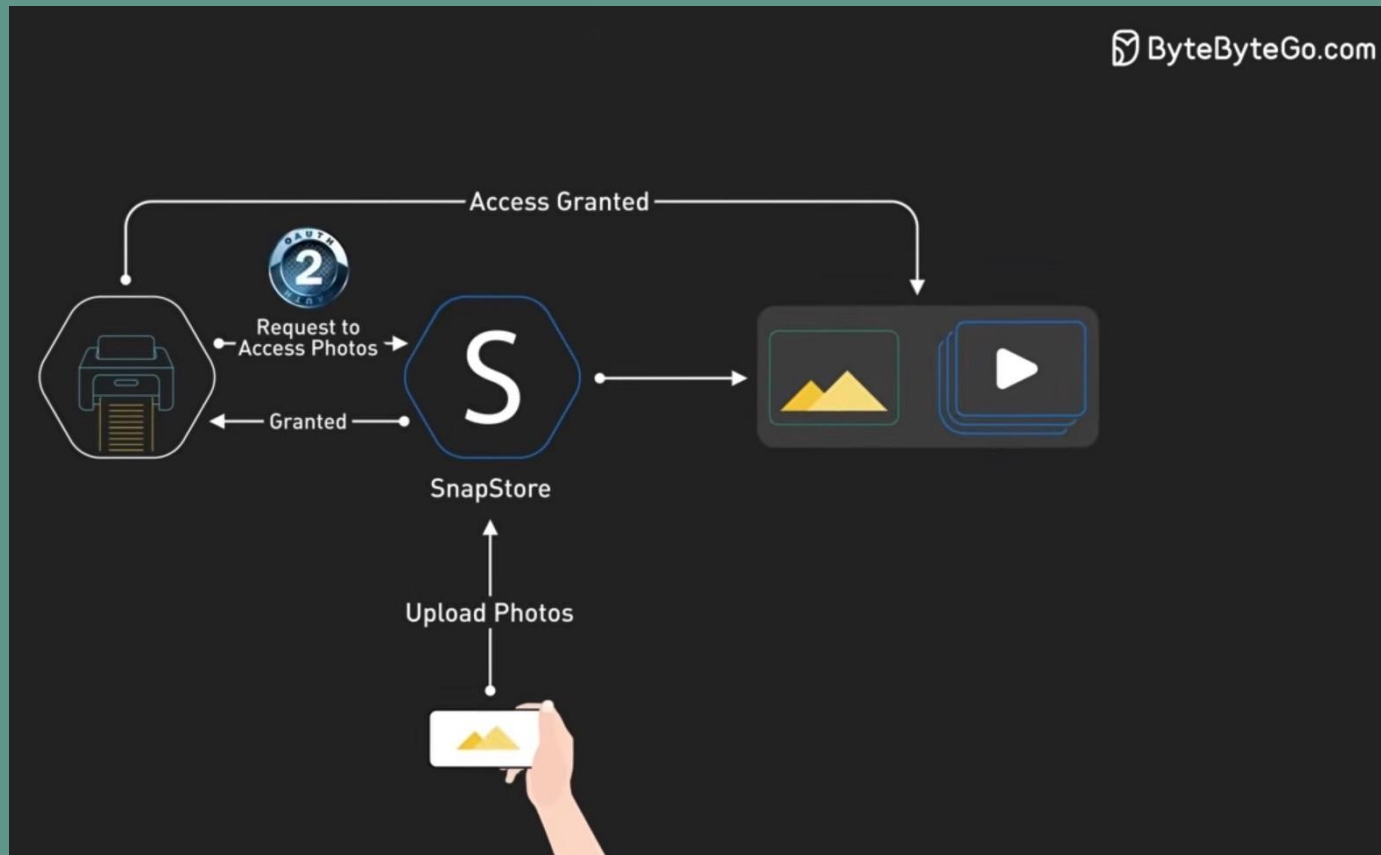
Language



/ OAUTH2 - LE PROTOCOLE

Architecture

Exemple





/ OAUTH2 - LE PROTOCOLE

VIDÉO

OAUTH 2.1 expliqué simplement (même si tu n'es pas dev) !

OAUTH 2.1 expliqué simplement (même si tu n'es pas dev) ! (Julien Topçu)

Devoxx France videos
39.3K subscribers

24K views · 3 years ago · PARIS

Pour rester informé sur l'actualité de Devoxx France, suivez nous sur twitter : [/ devoxxfr](https://twitter.com/devoxxfr) ou consultez notre site web <https://www.devoxx.fr/>

Il est très difficile aujourd'hui de déployer une application sur le web sans se frotter à OAuth2. Conçu pour mieux protéger les utilisateurs et les utilisatrices, ce standard de délégation d'autorisation s'est totalement im...

438 likes · Share · Save · Clip

From your search · From the series · Fro

I But What is OAuth 2 Really About? · OAuth 2 Explained In Simple Terms · ByteByteGo · 753K views · 2 years ago · 4:32

Trump : un président sain d'esprit ?



/ OAUTH2-PROXY

Historique

- Créé par Bitly / Décembre 2012
- Protocole [OIDC](#) (OpenID Connect)
- Proxy
- Intégration facile

☆ 14.2k stars
👁 93 watching
🔗 2.1k forks
Report repository

Releases 41

📦 v7.15.2 **Latest**
last week

+ 40 releases



/ OAUTH2-PROXY

Historique

☰ bitly / oauth2_proxy 🔍 📧 👤

Code Issues 146 Pull requests 97 Actions More ▾

This repository was archived by the owner on Jan 24, 2019. It is now read-only.

Commits

🔗 master ▾ 👤 All users ▾ 📅 All time ▾

🔗 Commits on Dec 11, 2012

initial import c6f07d5 📄 <>

👤 jehiah committed on Dec 11, 2012

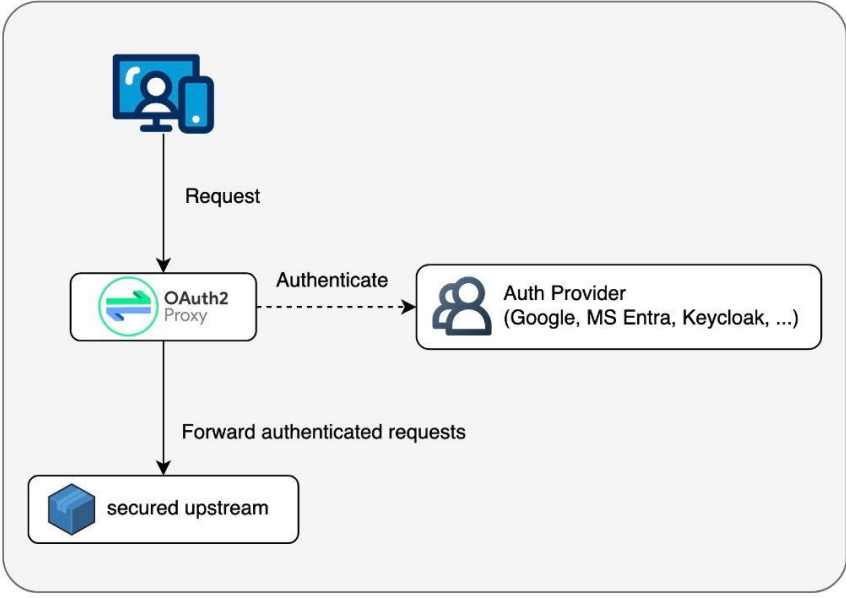
< Previous Next



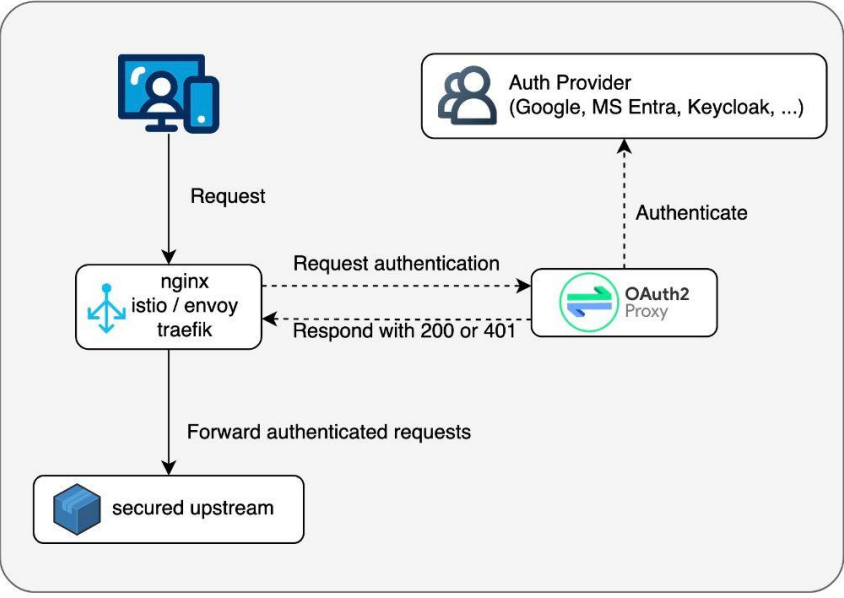
/ OAUTH2-PROXY

Proxy

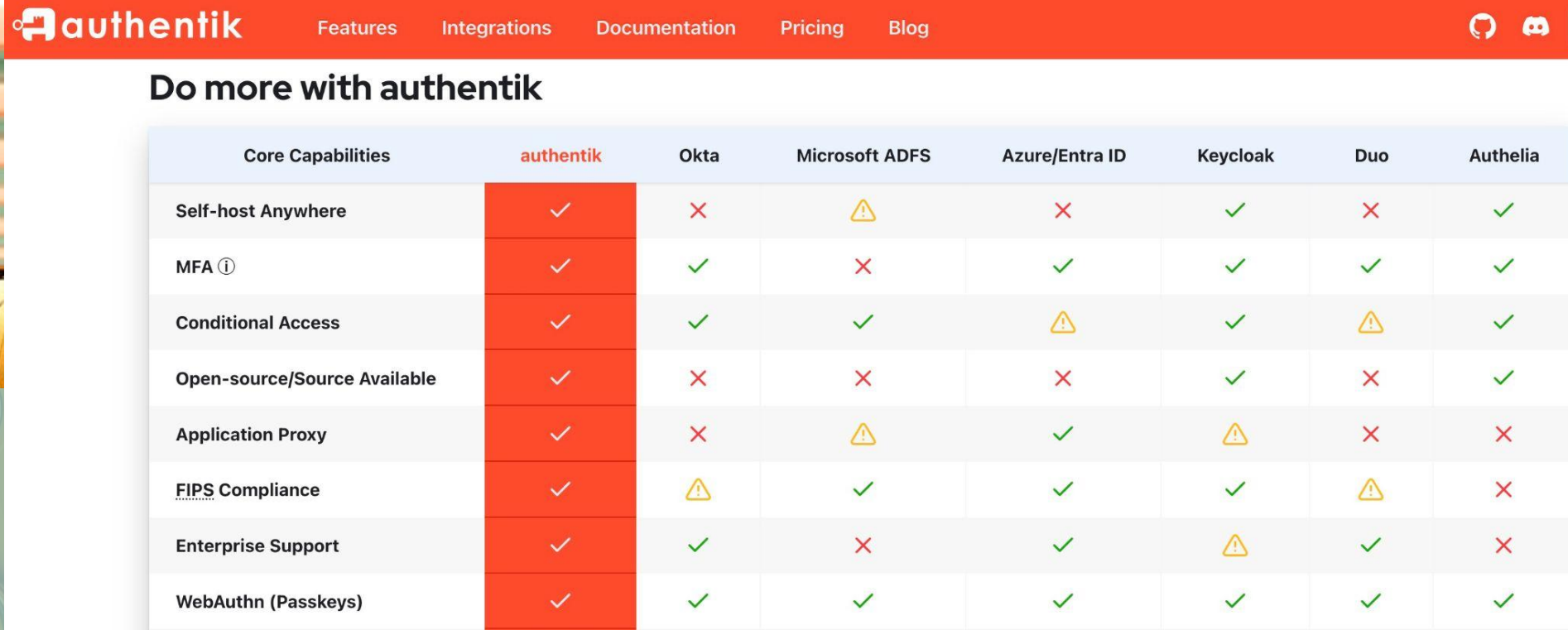
OAuth2 Proxy as a standalone reverse-proxy



OAuth2 Proxy as a authentication middleware



Pourquoi Keycloak ?



The screenshot shows the Authentik website's navigation bar with links for Features, Integrations, Documentation, Pricing, and Blog. Below the navigation is a section titled "Do more with authentik" which contains a comparison table. The table lists core capabilities and compares them across Authentik, Okta, Microsoft ADFS, Azure/Entra ID, Keycloak, Duo, and Authelia. Authentik's column is highlighted in red.

Core Capabilities	authentik	Okta	Microsoft ADFS	Azure/Entra ID	Keycloak	Duo	Authelia
Self-host Anywhere	✓	✗	⚠	✗	✓	✗	✓
MFA ⓘ	✓	✓	✗	✓	✓	✓	✓
Conditional Access	✓	✓	✓	⚠	✓	⚠	✓
Open-source/Source Available	✓	✗	✗	✗	✓	✗	✓
Application Proxy	✓	✗	⚠	✓	⚠	✗	✗
FIPS Compliance	✓	⚠	✓	✓	✓	⚠	✗
Enterprise Support	✓	✓	✗	✓	⚠	✓	✗
WebAuthn (Passkeys)	✓	✓	✓	✓	✓	✓	✓

/KEYCLOAK

Concurrency

Claude Opus 4.9 — Benchmark Comparison (PolycLOUD 2026 Exclusive) 🚀

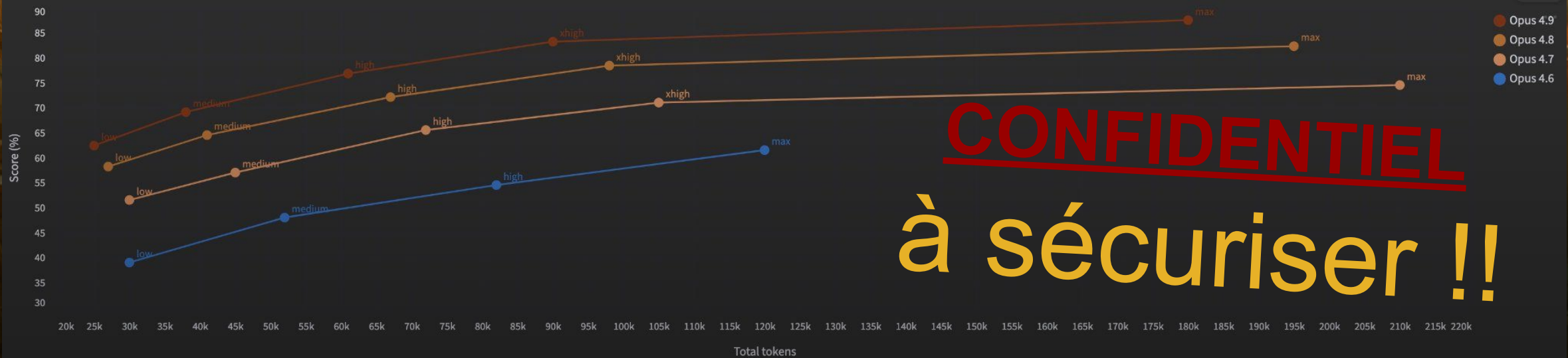
[Under NDA] Opus 4.9 (6 June 2026) sets a new frontier across every capability — outperforming Opus 4.8, GPT-5.5, and Gemini 3.5 Flash

⚠️ Note: Whatever you do, don't leak this information. 'I will not pursue you... but if you don't, I will look for you, I will find you... and I will kill you.' — Taken (2008) ⚠️

Capability	Benchmark	Opus 4.9	Opus 4.8	Opus 4.7	Opus 4.6	GPT-5.5	Gemini 3.5 Flash	Mythos Preview
Agentic coding	SWE-bench Pro	73.8%	69.2%	64.3%	53.4%	58.6%	55.1%	77.8%
Agentic coding	SWE-bench Verified	95.6%	92.4%	87.6%	80.8%	—	—	93.9%
Agentic terminal coding	Terminal-Bench 2.1	79.1%	74.6%	66.1%	65.4%	78.2%	76.2%	82.0%
Multidisciplinary reasoning	Humanity's Last Exam (no tools)	53.7%	49.8%	46.9%	40.0%	41.4%	40.2%	56.8%
Multidisciplinary reasoning	Humanity's Last Exam (with tools)	62.3%	57.9%	54.7%	53.3%	52.2%	—	64.7%
Agentic search	BrowseComp	91.4%	88.2%	79.3%	83.7%	89.3%	—	86.9%
Scaled tool use	MCP-Atlas	86.0%	82.5%	77.3%	75.8%	68.1%	83.6%	—
Agentic computer use	OSWorld-Verified	86.2%	83.4%	82.8%	72.7%	78.7%	78.4%	79.6%
Agentic financial analysis	Finance Agent v2	57.4%	53.9%	51.5%	60.1%	51.8%	57.9%	—
Cybersecurity vulnerability reproduction	CyberGym	85.1%	81.6%	73.1%	73.8%	66.3%	—	83.1%

Agentic coding performance by effort level

Anthropic internal autonomous agentic coding evaluation



CONFIDENTIEL
à sécuriser !!

DEMO TIME



KEYCLOAK



OAuth2
Proxy

Keycloak

Users

Users are the users in the current realm. [Learn more](#)

User list

Default search Search user → Add user ⋮

Refresh 1-2

<input type="checkbox"/>	Username	Email	Last name	First name
<input type="checkbox"/>	demo	! demo@example.com	User	Demo
<input type="checkbox"/>	demo2	! demo2@example.com	Beta User	Demo2

< Groups > Group details

beta-users

Child groups

Members

Attributes

Add member

Include sub-group users

<input type="checkbox"/>	Name	Email
<input type="checkbox"/>	demo2	demo2@example.com

You are logged in as a temporary admin user. To harden security, create a permanent admin account and delete the temporary one.



- streamlit **Current realm**
- Manage realms
- Manage
- Clients**
- Client scopes
- Realm roles
- Users
- Groups
- Sessions
- Events
- Configure
- Realm settings
- Authentication
- Identity providers
- User federation

Clients > Client details

oauth2-proxy OpenID Connect

Clients are applications and services that can request authentication of a user.

- Settings**
- Keys
- Credentials
- Roles
- Client scopes
- Sessions
- Advanced
- Events

General settings

Client ID *

Name

Description

Always display in UI Off

Access settings

Root URL

Home URL

Valid redirect URIs
[+ Add valid redirect URIs](#)

Valid post logout redirect URIs
[+ Add valid post logout redirect URIs](#)

Web origins

- streamlit **Current realm**
- Manage realms
- Manage
 - Clients
 - Client scopes
 - Realm roles
 - Users
 - Groups
 - Sessions
 - Events
- Configure
 - Realm settings
 - Authentication
 - Identity providers
 - User federation

Clients > Client details

oauth2-proxy

OpenID Connect

Clients are applications and services that can request authentication

- Settings
- Keys
- Credentials**
- Roles
- Client

Client Authenticator

Client Secret

Avant, sans la sécu.

```
apiVersion: networking.k8s.io/v1
kind: Ingress
metadata:
  name: streamlit
  annotations:
    nginx.ingress.kubernetes.io/ssl-redirect: "true"
    cert-manager.io/cluster-issuer: "selfsigned-issuer"
spec:
  ingressClassName: nginx
  tls:
    - hosts: streamlit.127.0.0.1.nip.io
      secretName: streamlit-tls
  rules:
    - host: streamlit.127.0.0.1.nip.io
      http:
        paths:
          - path: /
            pathType: Prefix
            backend:
              service:
                name: streamlit
                port:
                  number: 80
```

Après, avec la sécu.

```
apiVersion: networking.k8s.io/v1
```

```
kind: Ingress
```

```
metadata:
```

```
  name: streamlit
```

```
  annotations:
```

```
    nginx.ingress.kubernetes.io/ssl-redirect: "true"
```

```
    cert-manager.io/cluster-issuer: "selfsigned-issuer"
```

```
    nginx.ingress.kubernetes.io/auth-url:
```

```
      "http://oauth2-proxy.oauth2-proxy.svc.cluster.local/oauth2/auth"
```

```
    nginx.ingress.kubernetes.io/auth-signin:
```

```
      "https://streamlit.127.0.0.1.nip.io:30443/oauth2/start?rd=$escaped_request_uri"
```

```
spec:
```

```
  ingressClassName: nginx
```

```
[...]
```

Restriction à un groupe

```
COOKIE_SECRET=$(kubectl get secret -n oauth2-proxy oauth2-proxy -o  
jsonpath='{.data.cookie-secret}' | base64 -d 2>/dev/null || openssl rand -base64 32 | tr -- '+/' '-')
```

```
helm upgrade --install oauth2-proxy oauth2-proxy \  
--repo https://oauth2-proxy.github.io/manifests \  
--version "${OAUTH2_PROXY_CHART_VERSION}" \  
--namespace oauth2-proxy \  
--values k8s/oauth2-proxy-values.yaml \  
--set "config.cookieSecret=${COOKIE_SECRET}" \  
--set "extraArgs.allowed-group=/beta-users" \  
--wait
```

Automatique via Kyverno

```
apiVersion: kyverno.io/v1
```

```
kind: ClusterPolicy
```

```
metadata:
```

```
  name: add-oauth2-proxy-auth
```

```
  annotations:
```

```
    +
```

```
    policies.kyverno.io/title: Add OAuth2 Proxy Authentication
```

```
    policies.kyverno.io/category: Security
```

```
    policies.kyverno.io/description: >-
```

```
    Automatically adds oauth2-proxy authentication annotations to EVERY Ingress  
    resources in the default namespace.
```

```
spec:
```

```
  rules:
```

```
    - name: add-oauth2-annotations
```

```
      match:
```

```
        any:
```

ou semi-automatique

```
[...] - resources:
```

```
  kinds:
```

```
    - Ingress
```

```
  namespaces:
```

```
    - default
```

```
  selector:
```

```
    matchLabels:
```

```
      oauth2-proxy: enabled
```

```
  mutate:
```

```
    patchStrategicMerge:
```

```
    metadata:
```

```
      annotations:
```

```
        nginx.ingress.kubernetes.io/auth-url:
```

```
"http://oauth2-proxy.oauth2-proxy.svc.cluster.local/oauth2/auth"
```

```
        nginx.ingress.kubernetes.io/auth-signin:
```

```
"https://streamlit.127.0.0.1.nip.io:30443/oauth2/start?rd=$escaped_request_uri"
```

(en semi-automatique)

```
apiVersion: networking.k8s.io/v1
```

```
kind: Ingress
```

```
metadata:
```

```
  name: streamlit
```

```
  labels:
```

```
    oauth2-proxy: enabled
```

```
+
```

```
  annotations:
```

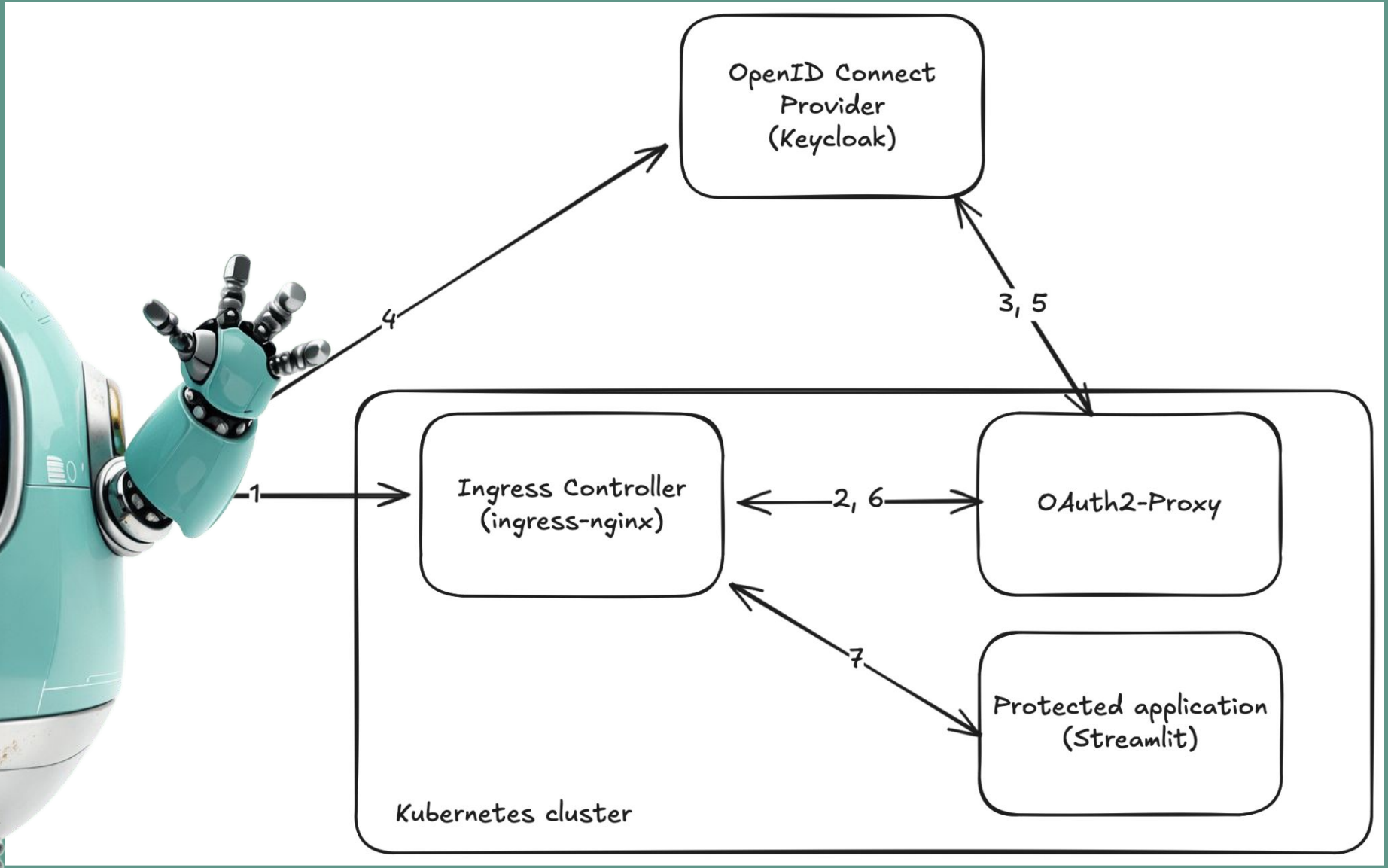
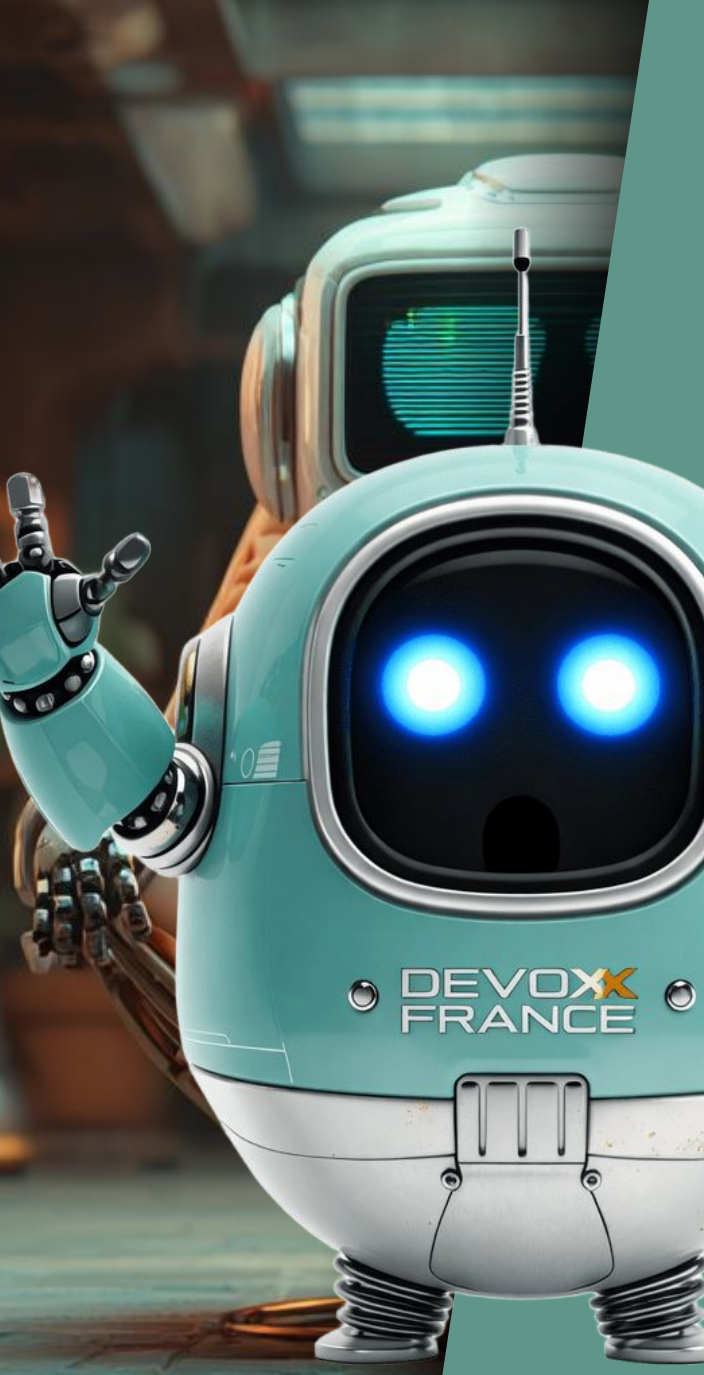
```
    nginx.ingress.kubernetes.io/ssl-redirect: "true"
```

```
    cert-manager.io/cluster-issuer: "selfsigned-issuer"
```

```
spec:
```

```
  ingressClassName: nginx
```

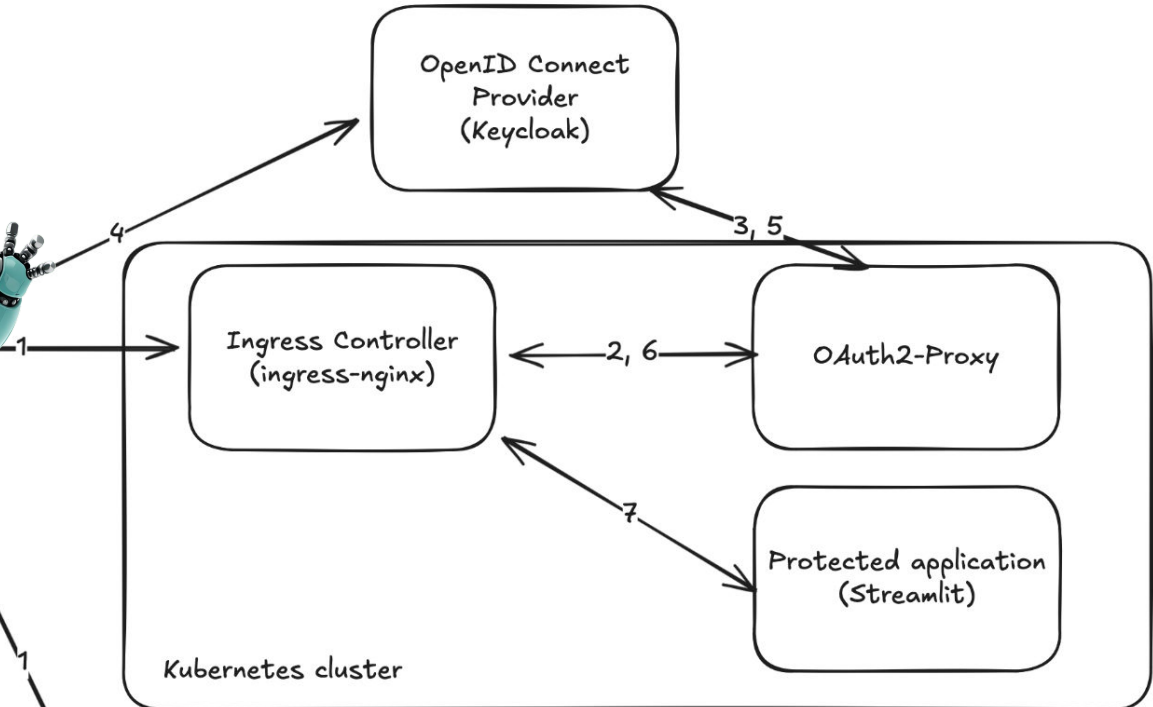
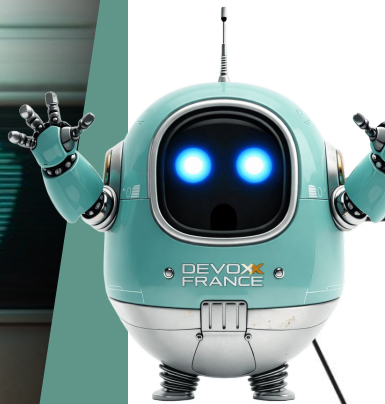
```
[...]
```



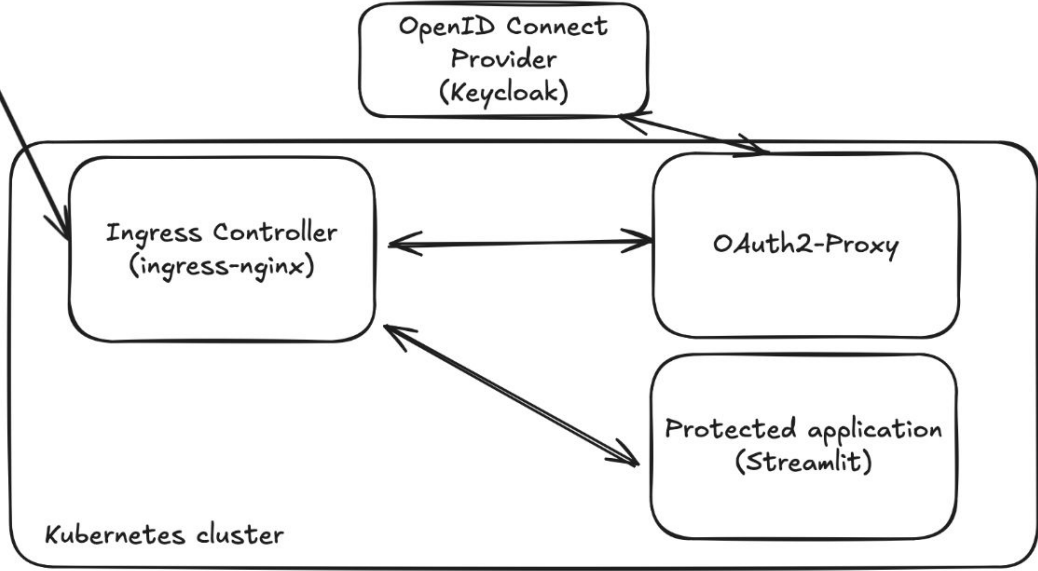
Race condition



```
cookie_csrf_per_request = true  
cookie_csrf_expire = "5m"
```



staging.*.domain.com



*.domain.com
(Production)



Un nouveau domaine ou de la config. ?



Staging	Production
<code>cookie_domains = [".staging.127.0.0.1.nip.io"]</code>	<code>".127.0.0.1.nip.io"</code>
<code>cookie_name = "_oauth2_proxy_staging"</code>	<code>"_oauth2_proxy_prod"</code>
<code>cookie_secret différent</code>	
<code>Cpdt: Cookie de PRD -> STG</code>	



OAUTH 2, déjà une "tech" ubiquitaire



We will take you to your default web browser to sign in and bring you back when it's complete...

Or open this link in your browser:

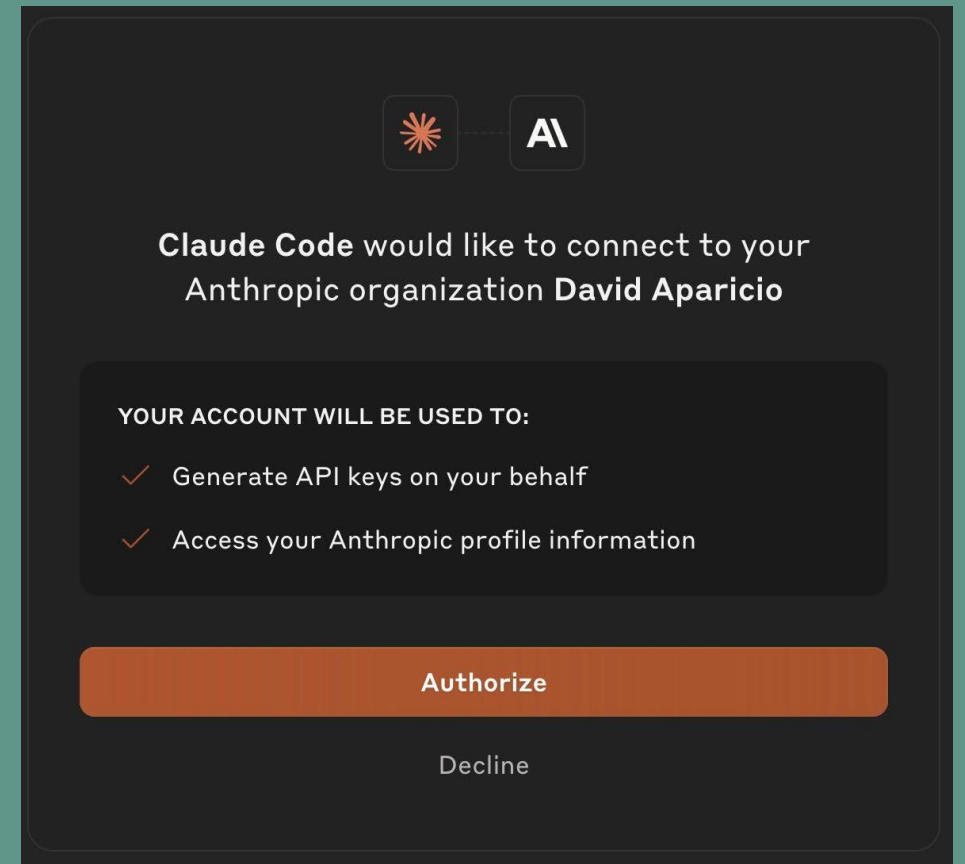
```
https://app.kiro.dev/signin?state=2c6491f4-a0e2-440e-9fb5-737d2d4b5787&code_challenge=_IH99ym1ojlKKrtKPM122ZVbvsfPeH5dlQz2AAlp6w&code_challenge_method=S256&redirect_uri=http%3A%2F%2Flocalhost%3A3128&redirect_from=KiroIDE
```

Cancel

By signing in, you agree to the [AWS Customer Agreement](#), [Service Terms](#), and [Privacy Notice](#).



OAUTH 2, déjà une "tech" ubiquitaire



OAUTH 2 un standard de l'industrie

oauth2.creditmutuel.fr/fr/logon.html

Connexion



Crédit Mutuel

Identifiant / Mot de passe Certificat Électronique SAFETRANS

Identifiant

Mot de passe

[Retour](#)

[Se connecter](#)

iam.esalia.com/connect/XUI?realm=sg_ws&locale=fr&goto=https://iam.esalia.com:443/connect/oauth2/authorize?response_type%3Dcode%26client_id%3D6

SOCIÉTÉ GÉNÉRALE

CHANGER DE LANGUE AIDE À LA CONNEXION

CONNEXION À VOTRE COMPTE ÉPARGNE SALARIALE ET RETRAITE

Numéro de compte

Oublié ?



Mémoriser mon numéro de compte

Mot de passe

Oublié ?

6

7

4

3

2

1

8

9

5

0



Se connecter

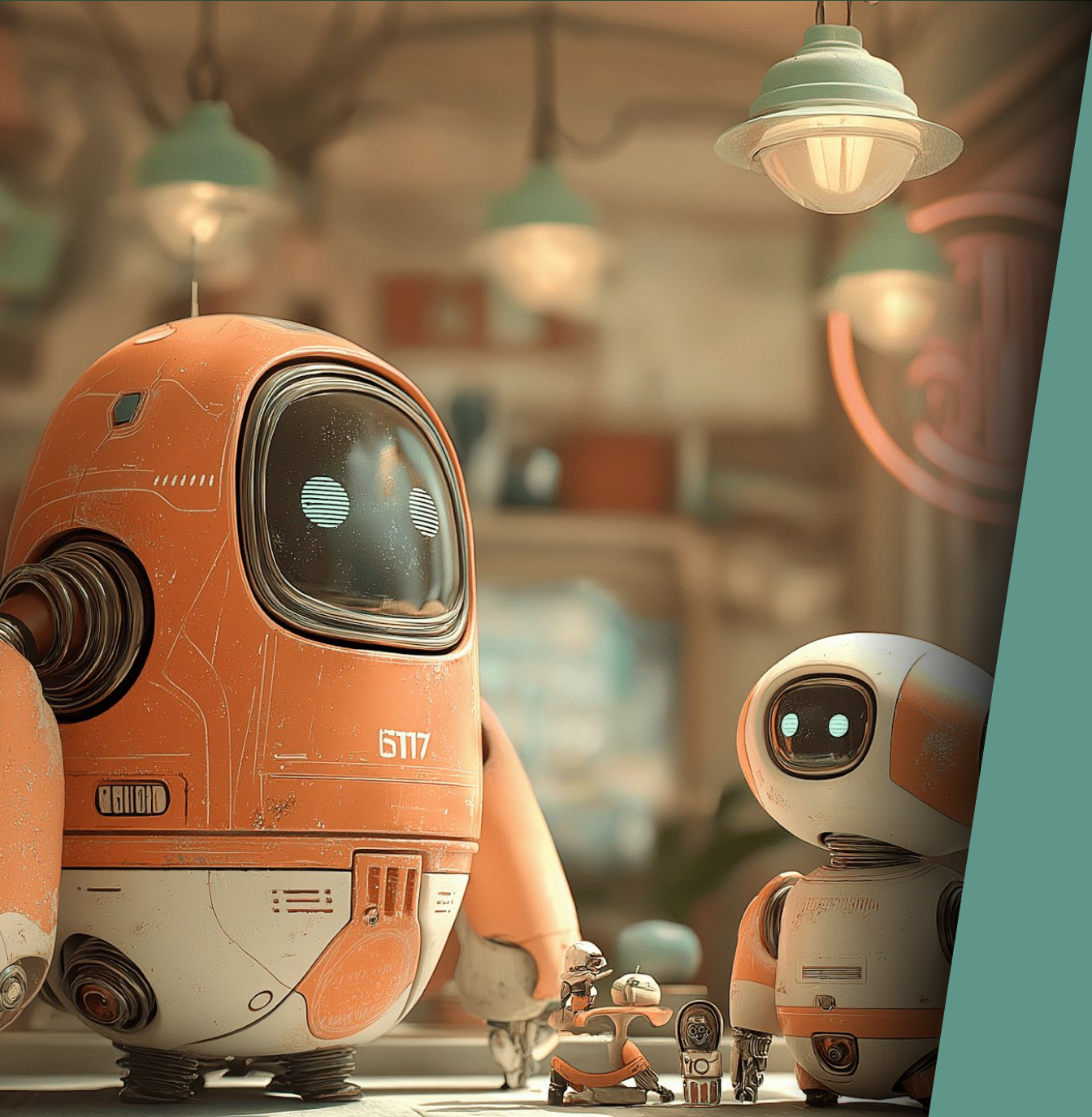
Bienvenue sur Esalia
Vivez différemment l'épargne salariale et retraite



Vous souhaitez gérer votre épargne où que vous soyez ?

Téléchargez l'Appli Esalia !





Avantages

- Rapide à mettre en place
- Simple à utiliser (annotations)
 - Mais pas d'équivalent Gateway API [gep-1494](#)
- Transparent pour les développeurs
- Automatique avec une policy Kyverno



github.com/davidaparcio/devoxxfr26-oauth2



Anubis

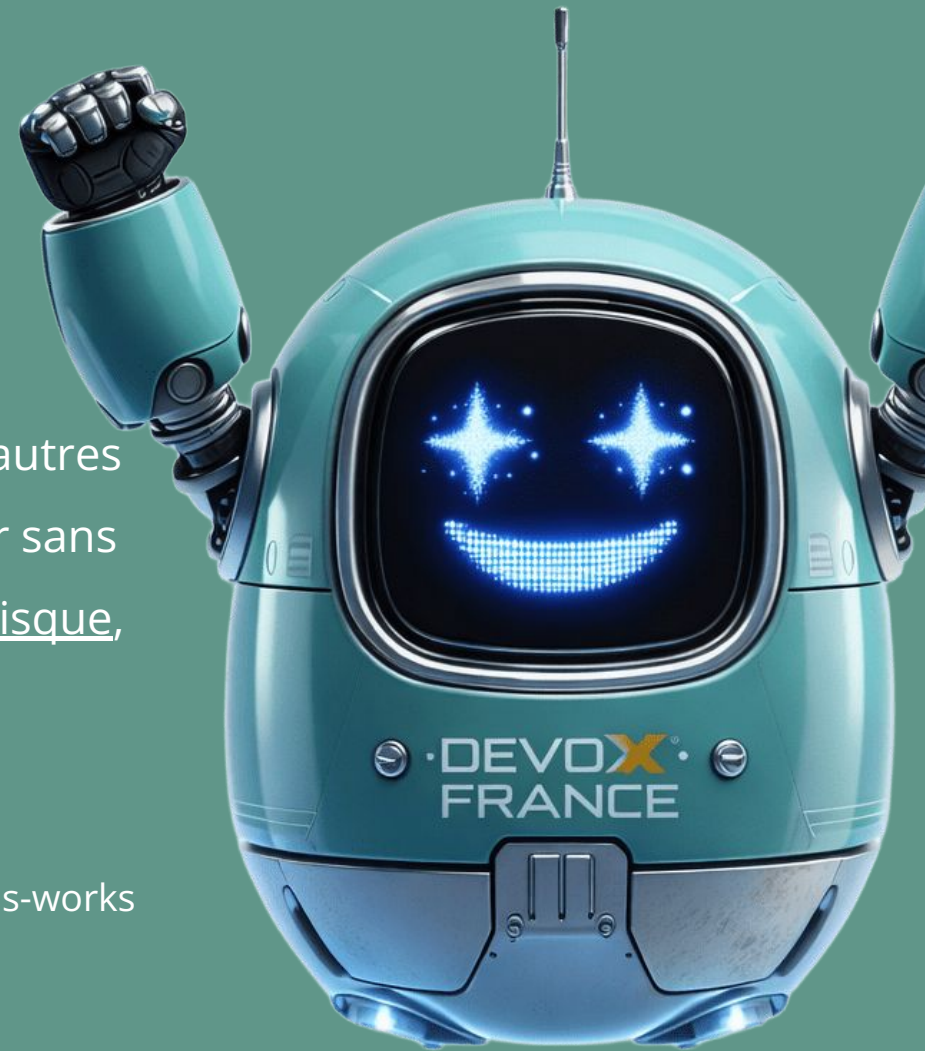
Laissez les agents AI loin de votre site

Et faites des réductions FinOps, au passage



Anubis permet aux lecteurs RSS et aux autres clients à faible risque (type git) de passer sans problème, tandis que les clients à haut risque, tels que les navigateurs et "scrapper IA", seront bloqués, par un challenge PoW.

<https://anubis.techaro.lol/docs/design/how-anubis-works>



PoW: Proof of Work, comme utilisé dans les cryptomonnaies

Making sure you're not a bot!



Loading...

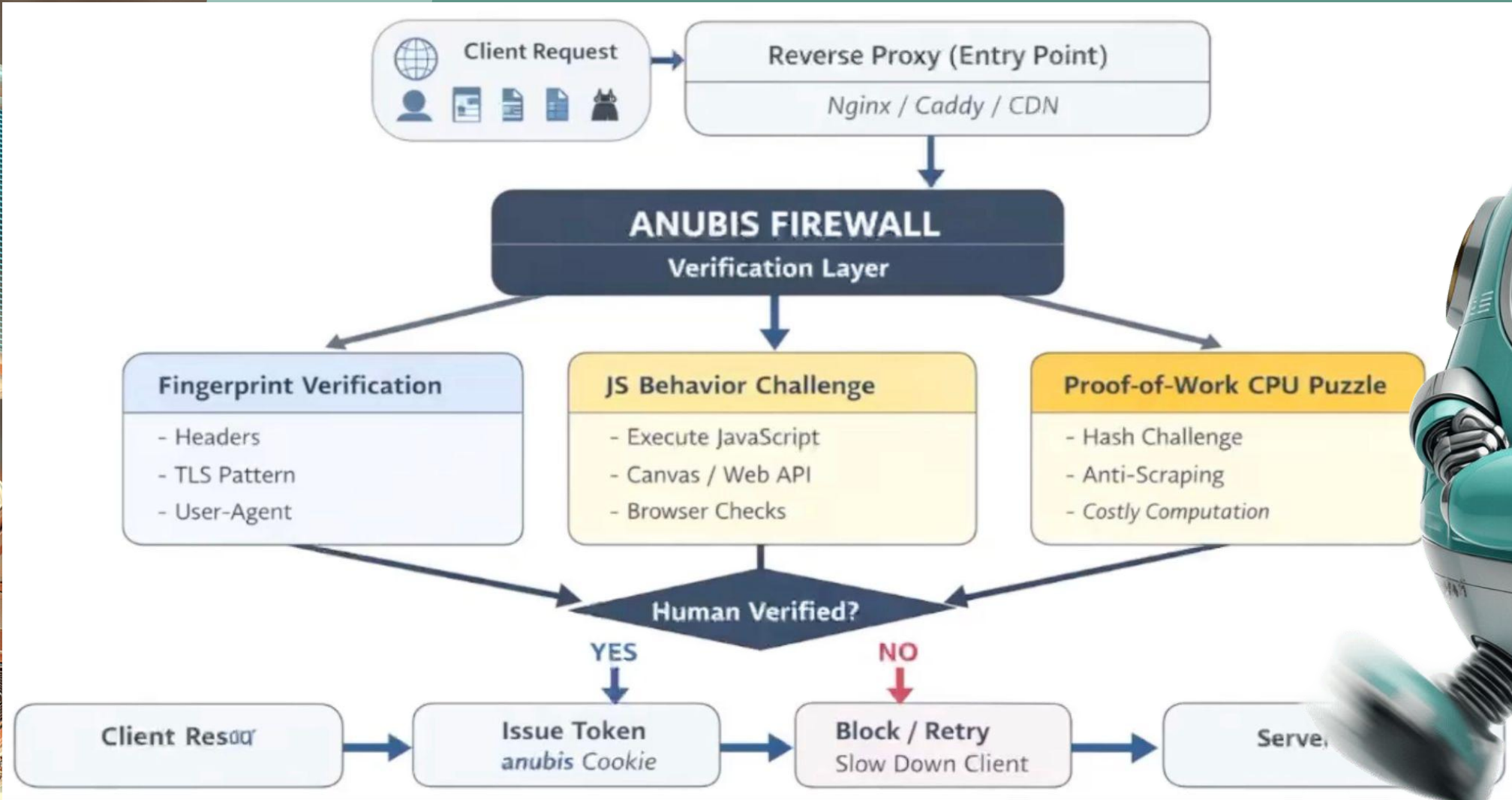
Please wait a moment while we ensure the security of your connection.

Protected by [Anubis](#) From [Techaro](#). Made with ❤️ in 🇨🇦.

Mascot design by [CELPHASE](#).

This website is hosted by Techaro. If you have any complaints or notes about the service, please contact support@techaro.lol and we will assist you as soon as possible. -- [Imprint](#)

This website is running Anubis version v1.25.0-37-g3a6e368.



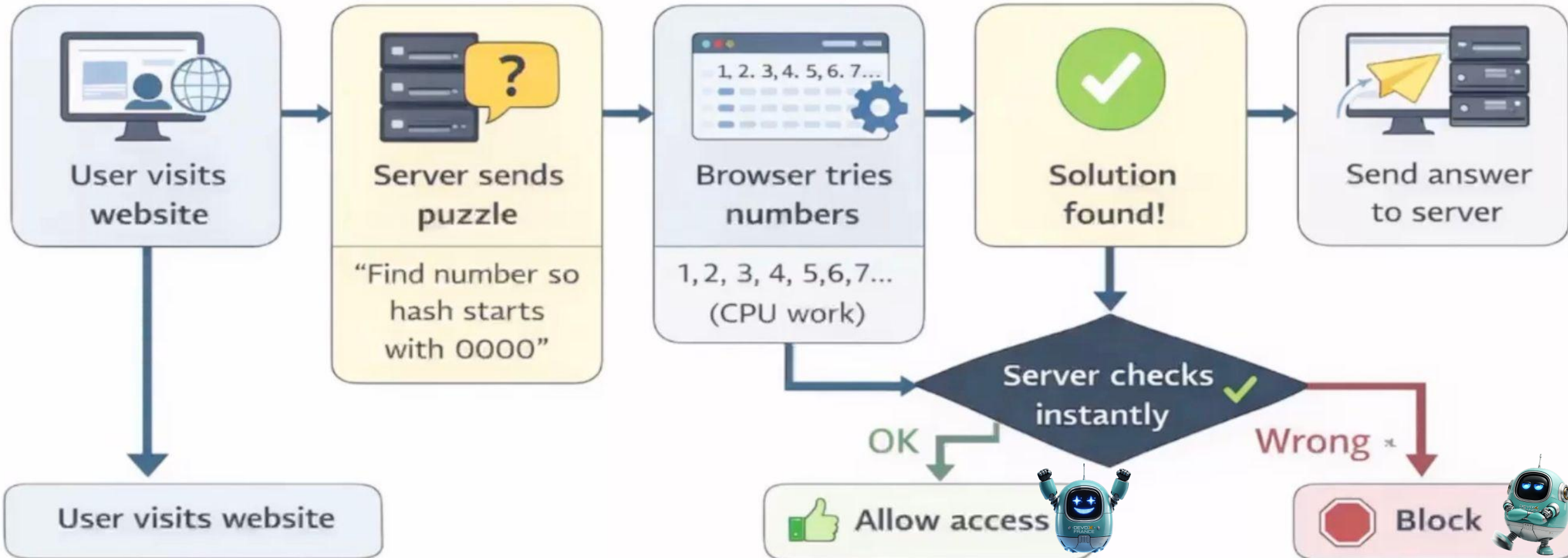
Anubis Will Judge You: AI-Powered Firewall Defending Web Traffic- DevConf.IN 2026
<https://xeiaso.net/blog/2025/anubis/>

hash(challenge + nonce) → random output

Nonce = "Number used once"

000000abc... ← rare → expensive to find

Try → Fail → Try → Fail → Try → WIN



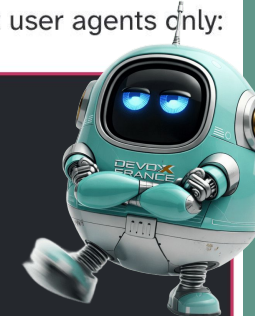
The math of difficulty

Difficulty in Anubis is measured in leading hexadecimal zero characters. Each hex character is 4 bits. The expected number of hashes you need to find a passing result is $16^{\text{difficulty}}$. The scaling is exponential, which is what makes the difficulty knob load-bearing.

Difficulty	Required leading zeros	Expected hashes	Median time, 4-worker laptop
3	000	~4,096	10 to 30 ms
4 (default)	0000	~65,536	100 to 250 ms
5	00000	~1,048,576	1.5 to 4 s
6	000000	~16,777,216	25 to 60 s
7	0000000	~268,435,456	7 to 15 minutes

Moving from difficulty 4 to difficulty 5 does not double the work. It increases it by sixteen times. From 4 to 6 is a 256x increase. This is what people mean when they say “just turn the difficulty up” and immediately regret it. Difficulty 6 is unusable as a default for any audience that includes phones. The Anubis bot policy ships with a deliberately mean rule that uses difficulty 16 and an algorithm explicitly named `slow`, intended for known-bot user agents only:

```
- name: generic-bot-catchall
  user_agent_regex: (?i:bot|crawler)
  action: CHALLENGE
  challenge:
    difficulty: 16 # impossible
    algorithm: slow # intentionally waste CPU cycles and time
```



16^{16} is approximately 1.8×10^{19} . That is not a number any real client is supposed to finish in a human lifetime. It is a polite way to say “no” while still pretending to challenge.




Comparison with Proprietary Alternatives

While many users default to enterprise giants for bot protection, Anubis fills a specific niche for those who want to avoid vendor lock-in or centralized points of failure.

Feature	Anubis	Cloudflare (Bot Management)	Akamai Bot Manager / DataDome
Cost	Free / Open Source	High (Enterprise Tier)	Enterprise Pricing
Self-Hosted	✅ Yes	❌ No	❌ No
Philosophy	Protection for the Small Web	Enterprise Scale	Enterprise Scale
Weight	Extremely Lightweight	N/A (Cloud Managed)	N/A (Cloud Managed)
Transparency	Open Source Code	Black Box Algorithms	Black Box Algorithms
Setup Complexity	Simple Proxy	Complex Dashboard	Complex Enterprise Integration

<https://opensource.daily.blog/anubis-the-lightweight-web-ai-firewall-for-the-small-internet>



```
- name: allow-api-requests
```

```
  action: ALLOW
```

```
  expression:
```

```
  all:
```

```
    - "'Accept' in headers'
```

```
    - 'headers["Accept"] == "application/json"'
```

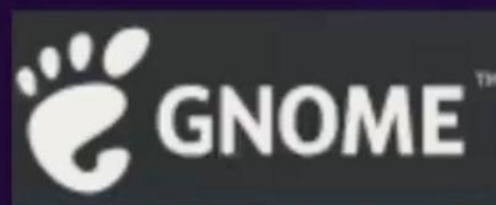
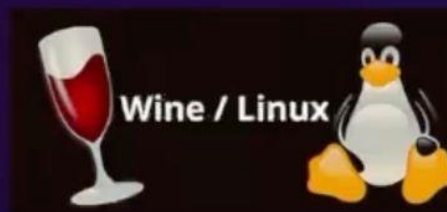
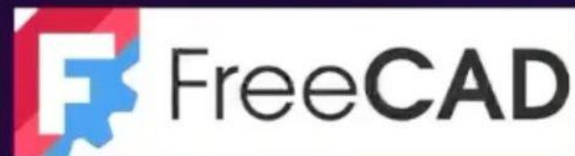
```
    - 'path.startsWith("/api/")'
```

```
- name: amazonbot
```

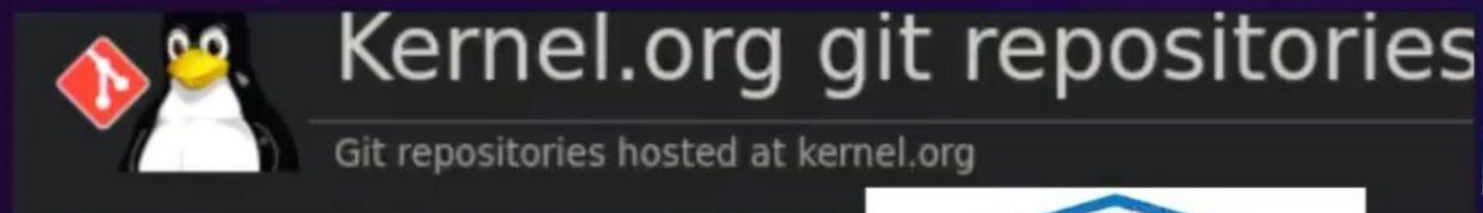
```
  user_agent_regex: Amazonbot
```

```
  action: DENY
```

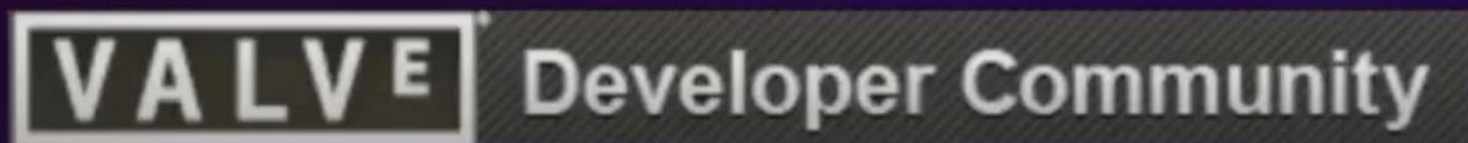
List of places where robots must suffer before downloading files



HACKLAB.TO



Many



More
DEVCONF.IN

DEMO TIME





thresholds:

- name: minimal-suspicion

expression: weight <= 0

action: ALLOW

- name: mild-suspicion

expression:

all:

- weight > 0

- weight < 10

action: CHALLENGE

challenge:

algorithm: metarefresh

difficulty: 1

- name: browser-proof-of-work

expression:

all:

- weight >= 10

- weight < 20

action: CHALLENGE

challenge:

algorithm: fast

difficulty: 5

- name: extreme-suspicion

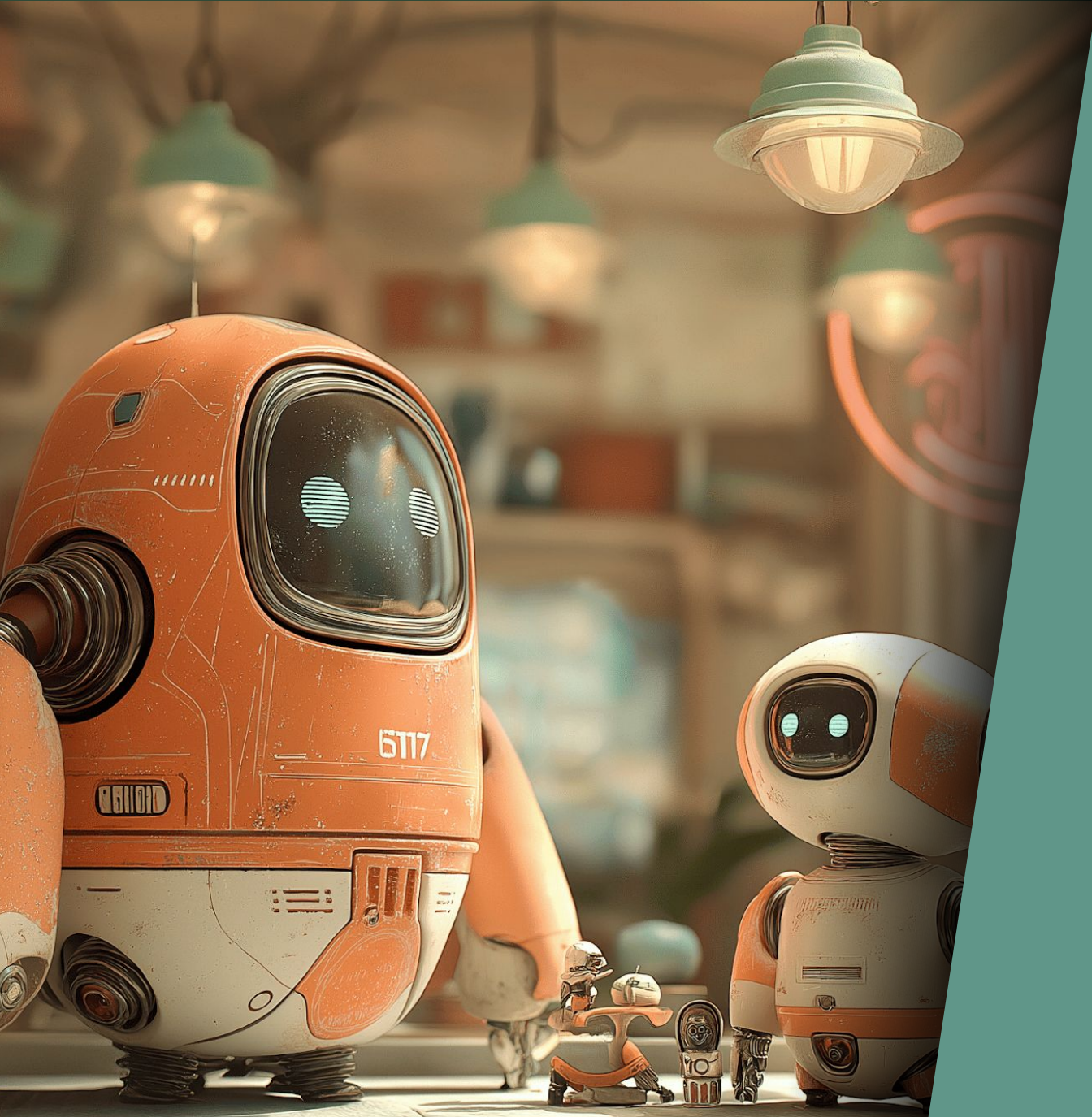
expression: weight >= 20

action: CHALLENGE

challenge:

algorithm: fast

difficulty: 7



Avantages

- Facile à mettre en place
- Robots.txt complet
- Écoconception (<128Mo RAM)
- Réduction des coûts (FinOps)
 - Impact important sur le GEO / SEO



github.com/davidaparcio/devoxxfr26-anubis

— GET http://<URL>/robots.txt —:

User-agent: AddSearchBot

User-agent: ChatGPT Agent

User-agent: ChatGPT-User

User-agent: Claude-SearchBot

User-agent: Claude-User

User-agent: Claude-Web

User-agent: MistralAI-User

User-agent: MistralAI-User/1.0

... (94 User-agent entries total — full list snipped) ...

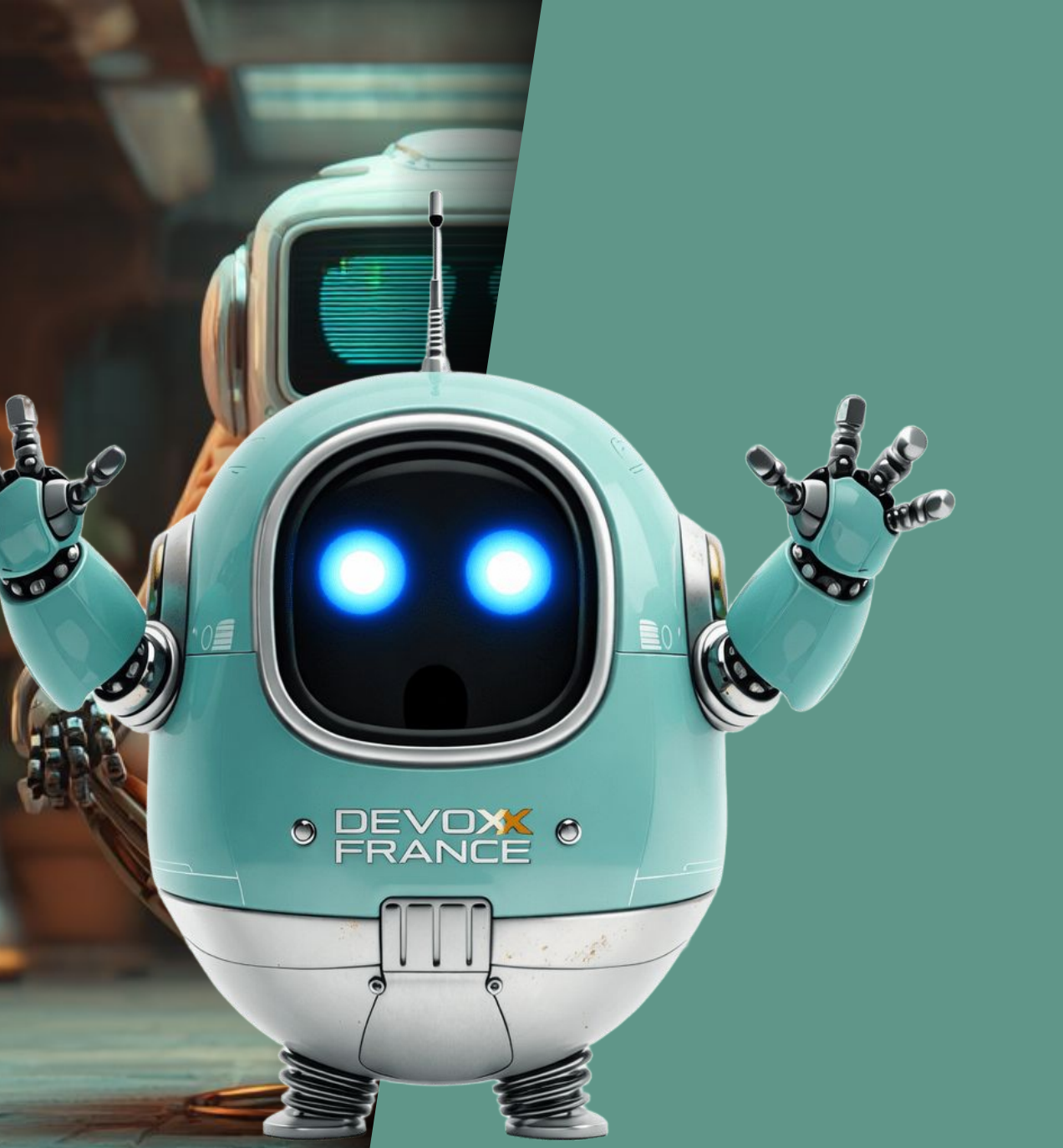
User-agent: YouBot

Disallow: /

User-agent: *

Disallow: /

```
http://localhost:8080/robots.txt
User-agent: AddSearchBot
User-agent: AI2Bot
User-agent: AI2Bot-Dolma
User-agent: aiHitBot
User-agent: Amazonbot
User-agent: Andibot
User-agent: anthropic-ai
User-agent: Applebot
User-agent: Applebot-Extended
User-agent: Awario
User-agent: bedrockbot
User-agent: bigsur.ai
User-agent: Brightbot 1.0
User-agent: Bytespider
User-agent: CCBot
User-agent: ChatGPT Agent
User-agent: ChatGPT-User
User-agent: Claude-SearchBot
User-agent: Claude-User
User-agent: Claude-Web
User-agent: ClaudeBot
User-agent: CloudVertexBot
User-agent: cohere-ai
User-agent: cohere-training-data-crawler
User-agent: Cotoyogi
User-agent: Crawlspace
User-agent: Datenbank Crawler
User-agent: Devin
User-agent: Diffbot
User-agent: DuckAssistBot
User-agent: Echobot Bot
User-agent: EchoboxBot
User-agent: FacebookBot
User-agent: facebookexternalhit
User-agent: Factset_spyderbot
User-agent: FirecrawlAgent
User-agent: FriendlyCrawler
User-agent: Gemini-Deep-Research
User-agent: Google-CloudVertexBot
User-agent: Google-Extended
User-agent: GoogleAgent-Mariner
User-agent: GoogleOther
User-agent: GoogleOther-Image
User-agent: GoogleOther-Video
User-agent: GPTBot
User-agent: iaskspider/2.0
User-agent: ICC-Crawler
User-agent: ImagesiftBot
User-agent: img2dataset
User-agent: ISSCyberRiskCrawler
User-agent: Kangaroo Bot
User-agent: LinerBot
User-agent: meta-externalagent
User-agent: Meta-ExternalAgent
User-agent: meta-externalfetcher
User-agent: Meta-ExternalFetcher
User-agent: MistralAI-User
User-agent: MistralAI-User/1.0
User-agent: MyCentralAIScraperBot
User-agent: netEstate Imprint Crawler
User-agent: NovaAct
User-agent: OAI-SearchBot
User-agent: omgili
```



DEVOPS · CYBER · SOUVERAINETÉ

SYSOPS

LINUX **PRATIQUE**

SERVEURS · OPEN SOURCE · CLOUD

MAI / JUIN 2026

FRANCE MÉTRO : 9,90 € BELUX : 10,90 € CH : 15,80 CHF
ESP/IT/PORT-CONT : 10,90 € DOM/S : 10,90 €
TUN : 23 TND MAR : 110 MAD CAN : 17,99 CAD

N°155

L 18864 - 155 - F: 9,90 € - RD



CPAP - K78590

K8S / STOCKAGE DISTRIBUÉ

Longhorn : une solution simple de stockage redondant pour votre cluster Kubernetes p. 68

RÉSEAU / SDN / VRF

Introduction au Virtual Routing and Forwarding pour segmenter un routage en domaines étanches p. 56

DEVSECOPS / CI/CD

Repensez l'architecture de votre usine logicielle en créant un « hub » de sécurité p. 48

WEB SCRAPING / HAPROXY

Pesez l'âme des requêtes web entrantes pour éviter la surcharge de vos serveurs :

DÉBARRASSEZ-VOUS DES BOTS IA AVEC ANUBIS !

p. 42

- Présentation & fonctionnement des outils utilisés
- Configuration d'Anubis & de HAProxy
- Définition des critères & des règles



NOUVELLE RUBRIQUE : IA & AGENTS



LLM / TECHNO

IA, entre promesses et réalité : quels usages concrets pour les Ops ? p. 08



PUPPET / ANSIBLE

Automatisation : penser son infrastructure avant de choisir ses outils p. 18



SYSTEMD / GREEN IT

Réalisez des économies : démarrez vos serveurs et VM à la demande p. 30

CONNECTED-DIAMOND.COM

DEMO TIME

OAuth2 Proxy

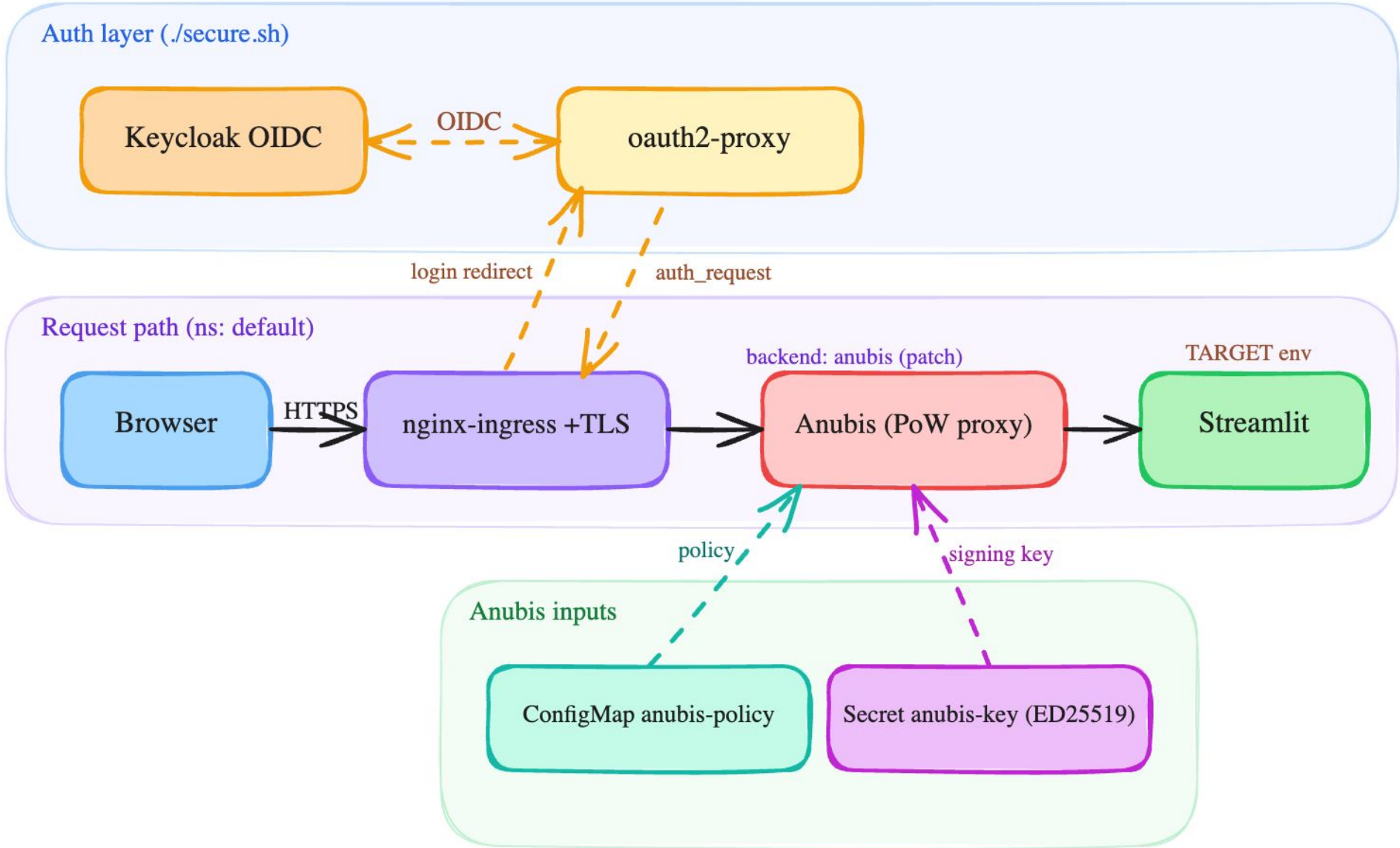


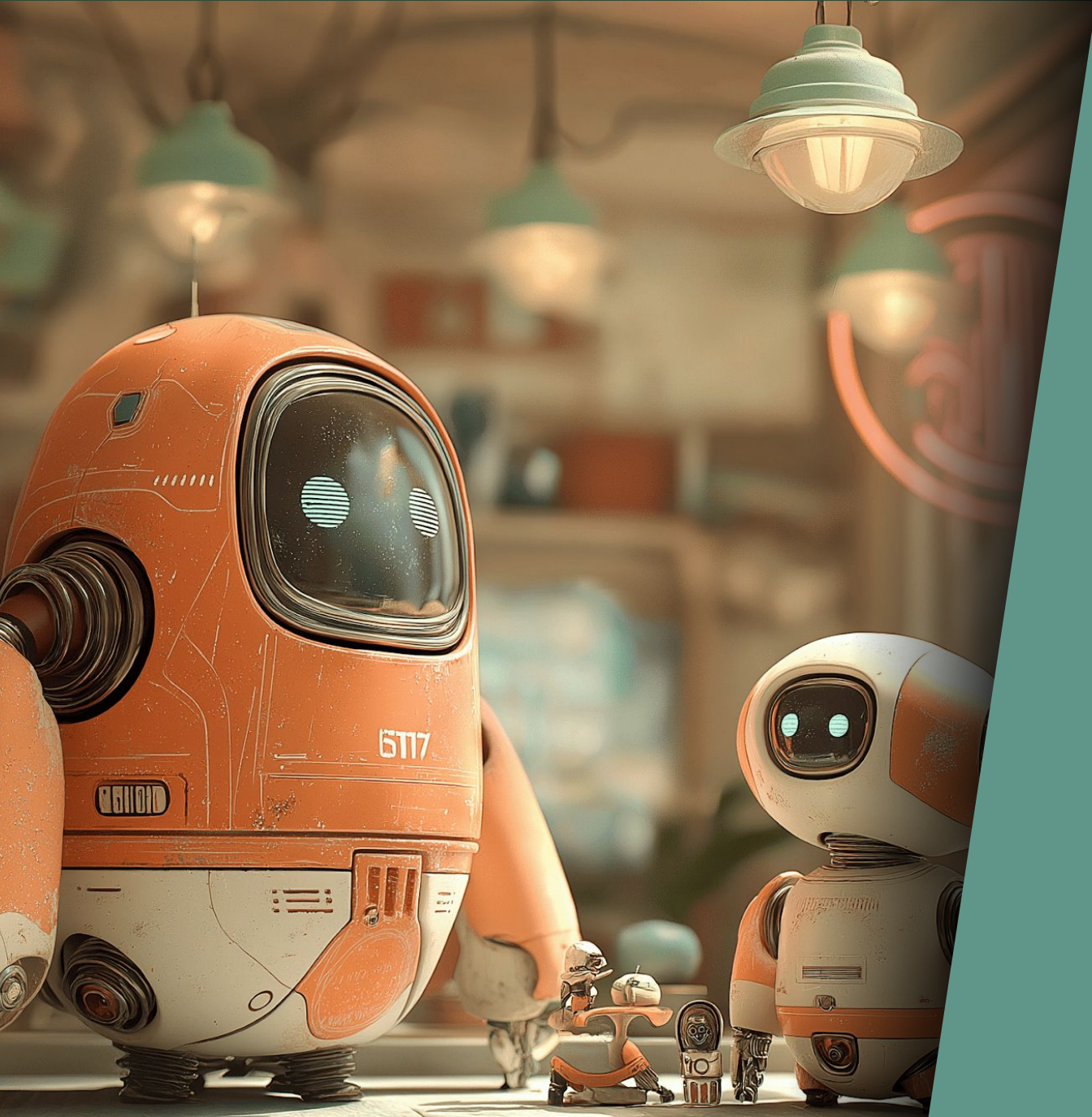
KEYCLOAK



Streamlit runtime architecture

Ingress -> oauth2-proxy (auth) -> Anubis (PoW) -> Streamlit





Conclusion: OAuth2-Proxy / Anubis

- Simplicité et Rapidité
- Écoconception
- Inconvénients à étudier au cas par cas



David Aparicio

15/ DD INSA de Lyon / UNICAMP (Brésil)
Facebook Open Academy / MIT AppInventor

17/ Dev(Sec)Ops @ AMADEUS (Nice, 2 ans)

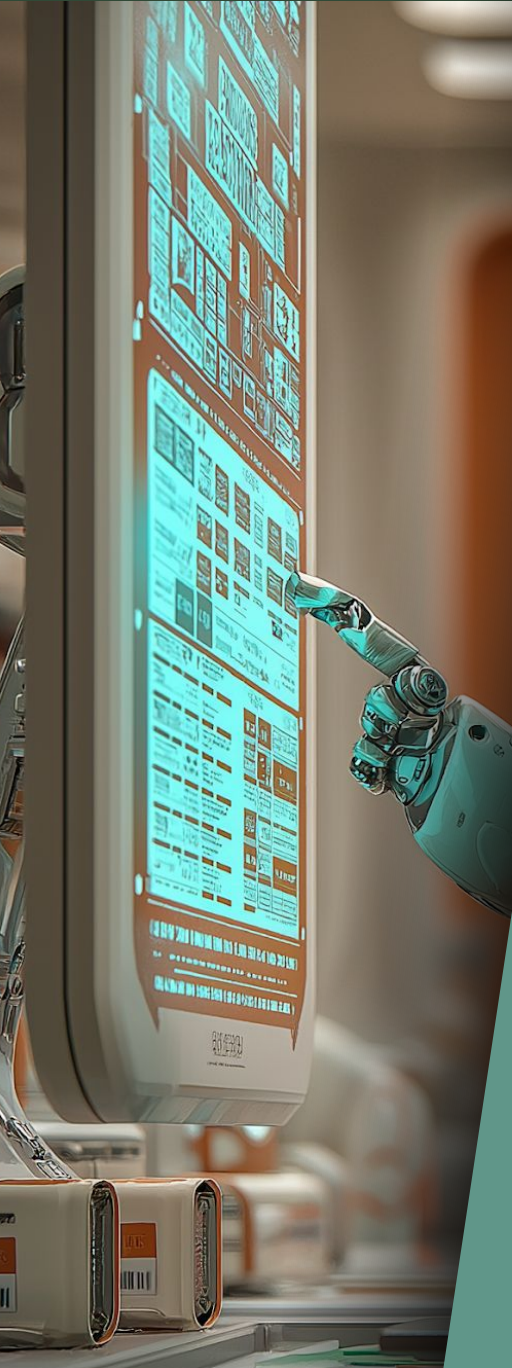
19/ Data(Sec)Ops @ OVHcloud (Lyon, 5 ans)

24/ Senior Dev(Sec)Ops @ Sopht (Lyon, 1 an)

25/ Senior SRE @ Agicap (Lyon, 2 mois)

26/ Senior DevOps @ Eudonet (Lyon, 6 mois)

david.aparicio.eu / @ davidaparicio / @ dadideo



« Après 8 heures d'opération avec Eudonet, j'étais déjà plus efficace qu'après 8 ans avec mon ancien CRM. »

Jean Lamoureux, Directeur général, Fondation de l'Hôtel-Dieu d'Alma.



Migrer vos données pour gagner en efficacité

Le cas Fondation Hôtel-Dieu D'Alma



CONTEXTE

15 000

DONATEURS DANS LEUR BDD

+/- 8000

ENTRÉES TRAITÉES PAR AN

MAIS :

- Données dispersées
- Manque de suivi centralisé
- Environnement applicatif trop large

Centraliser l'information et l'historique des donateurs

UNE SOLUTION FLUIDE

Migration CRM fluide

Intégration complète des donateurs, campagnes et reçus.



“ L'équipe a rapidement pris le virage d'expertise et de détail, tout en nous simplifiant grandement la démarche. ”



JEAN LAMOUREUX
Directeur général FHDA

BÉNÉFICES



~300 heures libérées par an



Meilleure gestion des données



Passage à la vitesse supérieure

Prêt à migrer votre CRM avec confiance ?

Échangeons ensemble



"Agir avec raison dans l'incertain", Laurence Devillers

MERCI BEAUCOUP POUR
VOTRE ATTENTION AINSI QUE
POUR VOTRE FEEDBACK

Merci aussi aux sponsors, bénévoles et organisateurs
pour ce magnifique PolyCloud 2026 !!



QUESTIONS ?

